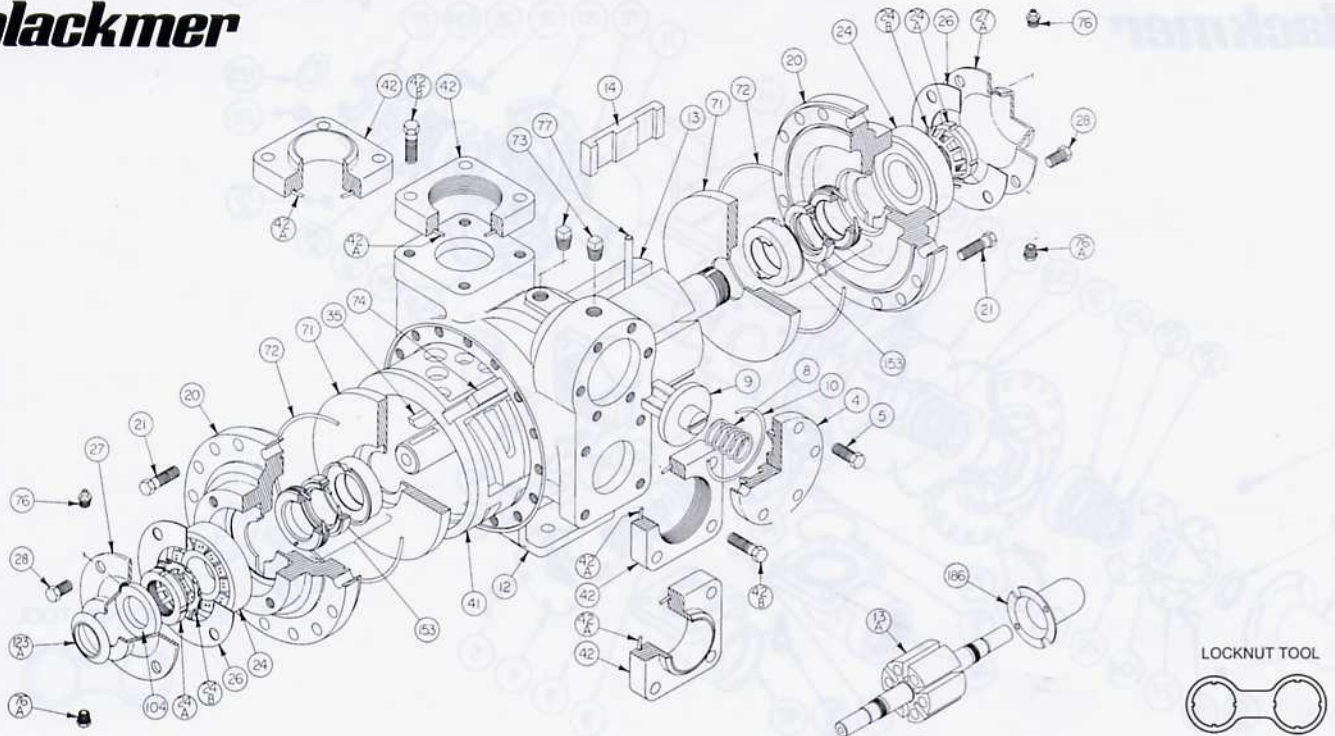


# Models: LGLD2E & LGLD3E

Discontinued models: LGL2E, TLGLD2E, LGL3E & TLGLD3E

## blackmer



Ref. No.	Description	Parts Per Pump	Size 2 Part No.	Size 3 Part No.	Ref. No.	Description	Parts Per Pump	Size 2 Part No.	Size 3 Part No.
4	Cover - Relief Valve (R/V)	1	414401	415113	41	Liner	1	184405	185111
5	Capscrews - R/V Cover	6	920331	920331	42	Flange - NPT	2	654401	655112
8	Spring - R/V	1	471423	475135	42	Flange - Weld		654405	655102
9	Valve - R/V (Std.)	1	454405	455129	42A	O-Ring - Flange	2	<sup>1</sup> 702004	<sup>1</sup> 702002
	Valve - R/V (Nickel Plated)		454406	455100	42B	Capscrew - NPT Flange	8	920384	920547
10	O-Ring - R/V Cover	1	<sup>1</sup> 701919	<sup>1</sup> 701925		Capscrew - Weld Flange		920351	920510
12	Casing <sup>1</sup>		014405	015127	71	Disc	2	<sup>1</sup> 064412	<sup>1</sup> 065112
13	Rotor & Shaft Assy. - LGL (Includes Ref. Nos. 24A & 24B)	1	264443	265149	72	O-Ring - Head	2	<sup>1</sup> 702022	<sup>1</sup> 702041
13A	Rotor & Shaft Assy. - LGLD & TLGLD** (Includes Ref. Nos. 24A & 24B)	1	264445	265148	73	Gage Plug	2	908198	908198
14	Vane - Duravane (Std.)	6	<sup>1</sup> 091419	<sup>1</sup> 095131	74	Key - Liner <sup>†</sup>	1	183991	185191
20	Head	2	034416	035128	76	Grease Fitting	2	317815	317815
21	Capscrews - Head (Size 2)	32	920351	N/A	76A	Grease Relief Fitting	2	701992	701992
	Capscrews - Head (Size 3)	40	N/A	920369	77	Push Rod	3	<sup>1</sup> 123905	<sup>1</sup> 125105
24	Ball Bearing	1	<sup>1</sup> 903156	<sup>1</sup> 903172	104	Grease Seal 2	1	<sup>1</sup> 331918	<sup>1</sup> 331908
24A	Locknut - Bearing	2	903521	903523	123A	Dirt Shield 2	1	<sup>1</sup> 701480	N/A
24B	Lockwasher - Bearing	2	<sup>1</sup> 903522	<sup>1</sup> 903524	186	Shaft Protector (TLGLD Models Only)	1	341601	341801
26	Gasket - Bearing Cover	2	<sup>1</sup> 383940	<sup>1</sup> 385125		Tool - Locknut		903091	903091
27	Bearing Cover (Inboard) <sup>3</sup>	1	041431	041815	153	Mechanical Seal Assembly Dual Service LPG or NH <sub>3</sub>	2	<sup>1</sup> 334439	335225
27A	Bearing Cover (Outboard) <sup>4</sup>	1	041433	041817		Kit - Maintenance - Dual Service LPG or NH <sub>3</sub>		898979	898981
28	Capscrews - Bearing Cover	8 - 12	920285	920285					
35	Key - Shaft	1	<sup>1</sup> 909130	<sup>1</sup> 909130					

<sup>1</sup> Included in Maintenance Kit    \*\* Double-Ended Rotor & Shaft.

The Following applies to double end shaft pump models LGLD2E, TLGLD2E, LGLD3E & TLGLD3E: <sup>3</sup> Use Two <sup>4</sup> Use None

<sup>†</sup> - Pump Models Before 1995 Require Key 184407.