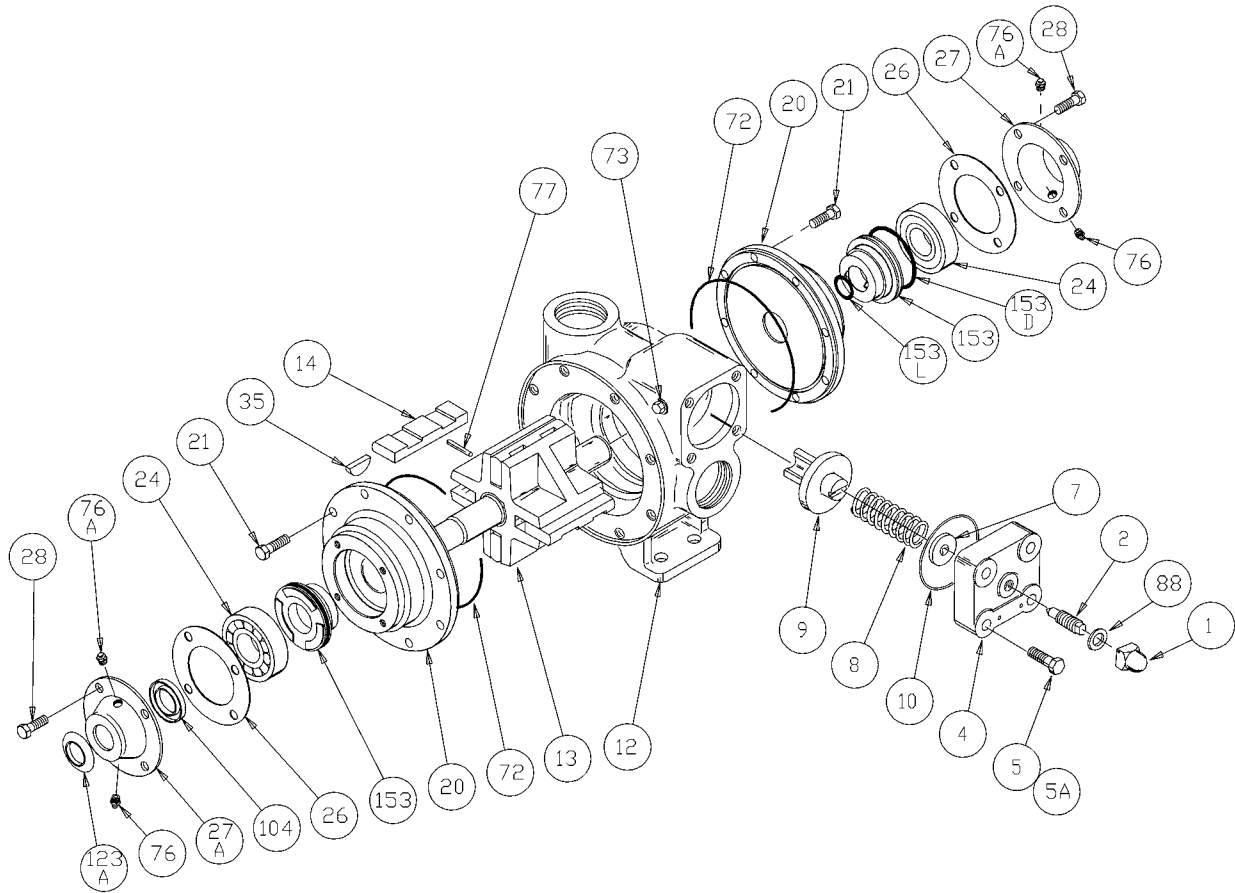


BLACKMER PARTS LIST

PUMP MODEL: TX1.5

(See Instructions 201-A00 for Installation, Operation and Maintenance)

Section 201
Effective February 2003
Replaces January 2003

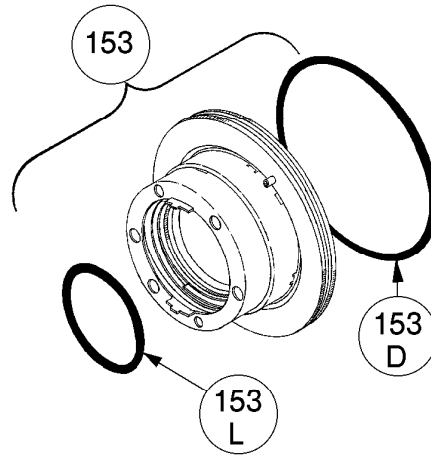


Ref. No.	Description	Parts Per Pump	Part No.	Ref. No.	Description	Parts Per Pump	Part No.
1	Cap – Relief Valve (R/V)	1	411453	20	Head	2	031207
2	Adjusting Screw – R/V	1	431401	21	Capscrews – Head	16	920331
4	Cover – R/V	1	411469	24	Ball Bearing	2	¹ 903156
5	Capscrew – R/V Cover	3	920316	26	Gasket- Bearing Cover	2	¹ 381406
5A	Capscrew w / Hole – R/V Cover	1	920310	27	Bearing Cover – Outboard	1	041433
7	Spring Guide – R/V	1	423955	27A	Bearing Cover – Inboard	1	041431
8	Spring – R/V (51-75 psi)	1	471420	28	Capscrews – Bearing Cover	8	920285
	Spring – R/V (76-100 psi) (Std.)		471425	35	Key – Shaft	1	¹ 909130
	Spring – R/V (101-125 psi)		471430	72	O-Ring – Head (Buna-N)	2	¹ 702228
	SS Spring – R/V (51-75 psi)		471418		O-Ring – Head (FKM)		702229
	SS Spring – R/V (76-100 psi)		471427		O-Ring – Head (PTFE)		702230
	SS Spring – R/V (101-125 psi)		471429		73	Gage Plug	2
9	Valve – R/V	1	451416	76	Grease Fitting	2	317815
	Valve – R/V (Nickel Plated)		451414	76A	Grease Relief Fitting	2	701992
10	O-Ring – R/V Cover (Buna-N)	1	¹ 702211	77	Push Rods	2	¹ 123305
	O-Ring – R/V Cover (FKM)		702212	88	Gasket – R/V Cap	1	¹ 701981
	O-Ring – R/V Cover (PTFE)		702213	104	Grease Seal	1	¹ 331918
12	Cylinder	1	021203	123A	Dirt Shield	1	¹ 701480
13	Rotor & Shaft	1	261205	153	Mechanical Seal	2	See Backside
14	Vane – Duravane (Std.)	4	¹ 091219		Kit - Maintenance		898949
	Vane – Laminate		093351				
	Vane – Bronze		093328				

¹ Included in Maintenance Kit SS = Stainless Steel Keep this parts list with Installation, Operation and Maintenance Instructions.

MECHANICAL SEALS

REF. NO.	PART NAME	PARTS PER PUMP	PART NO.
153	Mechanical Seal Complete (Std.) Cast Iron Stationary Seat, Carbon Seal Face, Buna-N O-Rings. (INCN)	2	¹ 331601
	Mechanical Seal Complete - Cast Iron Stationary Seat, FKM O-Ring, Carbon Seal Face w/ PTFE Seal Ring. (IVCT)		331628
	Mechanical Seal Complete - Cast Iron Stationary Seat, Buna-N O-Ring, Carbon Seal Face w/ PTFE Seal Ring. (INCT)		331602
	Mechanical Seal Complete - Cast Iron Stationary Seat, PTFE O-Ring, Carbon Seal Face w/ PTFE Seal Ring. (IACT)		331673
	Mechanical Seal Complete - Stainless Steel Stationary Seat, PTFE O-Ring, Carbon Seal Face w/ PTFE Seal Ring. (WACT)		331648
153D	O-Ring - Stationary (Buna-N)	2	701934
	O-Ring - Stationary (FKM)		701921
	O-Ring - Stationary (PTFE)		702056
153L	O-Ring - Rotating (Buna-N)	2	701922
	O-Ring - Rotating (FKM)		701980
	Seal Ring - Rotating (PTFE)		**

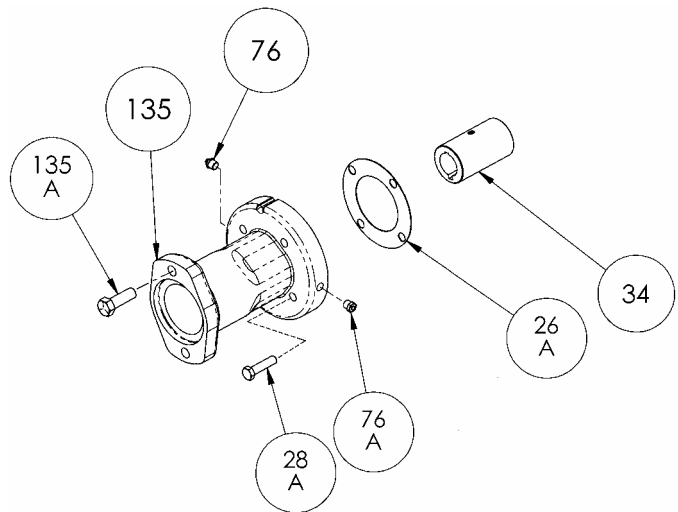


¹ Included in Maintenance Kit

** PTFE Rotating Seal Ring is not available as a separate part.

OPTIONAL HYDRAULIC MOTOR ADAPTER PARTS

REF. NO.	PART NAME	PARTS PER PUMP	PART NO.
See Below	Hydraulic Motor Adapter Kit *	See Below	891205
26A	Gasket – Hydraulic Motor Adapter	1	383940
28A	Capscrew – Hydraulic Motor Adapter / Head	4	920369
34	Coupling w/ Setscrew – for 1" straight key hydraulic motor	1	906966
76	Grease Fitting	1	317815
76A	Grease Relief Fitting	1	701992
135	Hydraulic Motor Adapter – SAE A Flange	1	041827
135A	Capscrew – Adapter / Motor	2	920510



Hydraulic Motor Adapter Kits shipped before Spring 2002 were of a two piece design – refer to page 206-B00.

