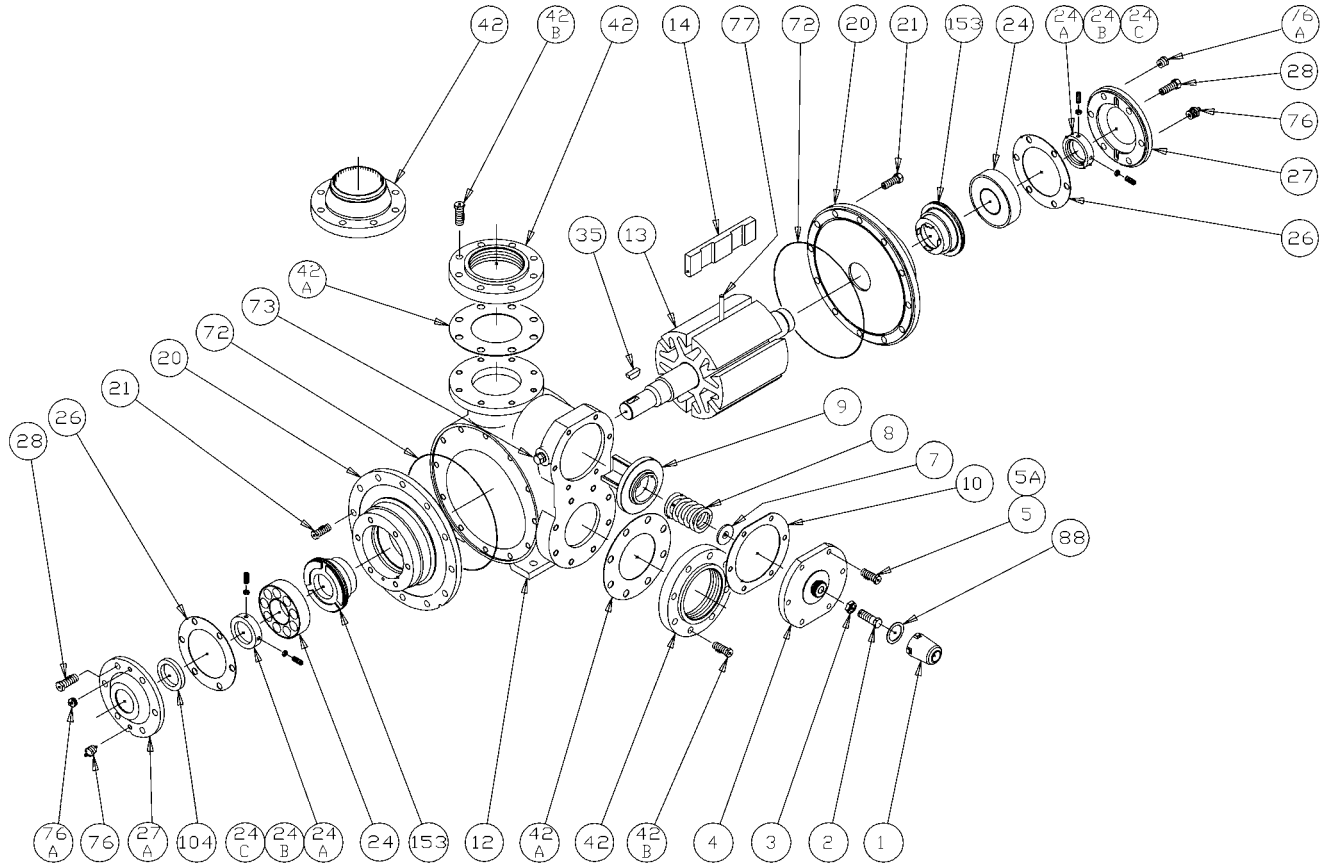


BLACKMER PARTS LIST

PUMP MODEL: TX4A

(See Instructions 201-A00 for Installation, Operation and Maintenance)

| | |
|-----------|---------------|
| Section | 201 |
| Effective | February 2003 |
| Replaces | January 2003 |



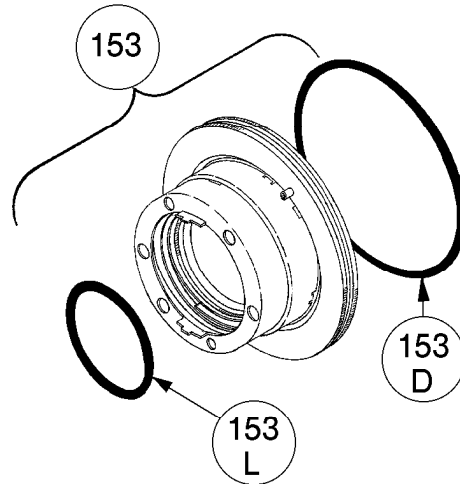
| Ref. No. | Description | Parts Per Pump | Part No. | Ref. No. | Description | Parts Per Pump | Part No. |
|-------------------------------|---------------------------------|----------------|---------------------|----------|------------------------------|----------------|---------------------|
| 1 | Cap – Relief Valve (R/V) | 1 | 413957 | 24 | Ball Bearing | 2 | ¹ 903182 |
| 2 | Adjusting Screw – R/V | 1 | 436307 | 24A | Lock Collar – Bearing | 2 | ¹ 721937 |
| 3 | Locknut – Adjusting Screw | 1 | 436355 | 24B | Setscrew | 4 | ¹ 922104 |
| 4 | Cover – R/V | 1 | 411903 | 24C | Jam Nut | 4 | ¹ 922923 |
| 5 | Capscrew – R/V Cover | 5 | 920351 | 26 | Gasket – Bearing Cover | 2 | ¹ 386950 |
| 5A | Capscrew w / Hole – R/V Cover | 1 | 920348 | 27 | Bearing Cover – Outboard | 1 | 041905 |
| 7 | Spring Guide – R/V | 1 | 426355 | 27A | Bearing Cover – Inboard | 1 | 041903 |
| 8 | Spring – R/V (35-50 psi) | 1 | 476303 | 28 | Capscrews – Bearing Cover | 12 | 920491 |
| | Spring – R/V (51-75 psi) | | 476310 | 35 | Key – Shaft | 1 | ¹ 909135 |
| | Spring – R/V (76-125 psi)(Std.) | | 476305 | 42 | Flange – 4" NPT | 1-2 | 651900 |
| | SS Spring – R/V (35-50 psi)* | | 476320 | | Flange – 4" Weld | | 651905 |
| | SS Spring – R/V (51-75 psi)* | | 476314 | 42A | Gasket – Flange | 2 | ¹ 381903 |
| SS Spring – R/V (76-125 psi)* | 476321 | 42B | Capscrew – Flange | 16 | 920532 | | |
| 9 | Valve – R/V (Std.) | 1 | 456315 | 72 | O-Ring – Head (Buna-N) (Std) | 2 | ¹ 702023 |
| | Valve – R/V (Nickel Plated) | | 456300 | | O-Ring – Head (FKM) | | 702024 |
| 10 | Gasket – R/V Cover | 1 | ¹ 531903 | | O-Ring – Head (PTFE) | | |
| 12 | Cylinder | 1 | 021906 | 73 | Gage Plug | 2 | 908198 |
| 13 | Rotor & Shaft | 1 | 261950 | 76 | Grease Fitting | 2 | 317815 |
| 14 | Vane – Duravane (Std.) | 6 | ¹ 091924 | 76A | Grease Relief Fitting | 2 | 701992 |
| | Vane – Laminate | | 091931 | 77 | Push Rod | 3 | ¹ 121905 |
| | Vane – Bronze | | 091953 | 88 | Gasket – R/V Cap | 1 | ¹ 533908 |
| 20 | Head | 2 | 031908 | 104 | Grease Seal | 1 | ¹ 904190 |
| 21 | Capscrews – Head | 24 | 920510 | | Kit - Maintenance | | 898953 |

¹ Included in Maintenance Kit

* Stainless Steel Spring

MECHANICAL SEALS – TX4A MODELS

| REF. NO. | PART NAME | PARTS PER PUMP | PART NO. |
|----------|---|----------------|---------------------|
| 153 | Mechanical Seal Complete – Std. Cast Iron Stationary Seat, Carbon Seal Face, Buna-N O-Rings. (INCN) | 2 | ¹ 336958 |
| | Mechanical Seal Complete - Cast Iron Stationary Seat, PTFE O-Ring, Carbon Seal Face w/ PTFE Seal Ring. (IACT) | | 331973 |
| | Mechanical Seal Complete - Cast Iron Stationary Seat, Carbon Seal Face w/ FKM O-Rings. (IVCV) | | 336982 |
| | Mechanical Seal Complete - Cast Iron Stationary Seat, Bronze Seal Face w/ FKM O-Rings. (IVBV) | | 336984 |
| 153D | O-Ring - Stationary (Buna-N) | 2 | 701945 |
| | O-Ring - Stationary (FKM) | | 711932 |
| | O-Ring - Stationary (PTFE) | | 702090 |
| 153L | O-Ring - Rotating (Buna-N) | 2 | 701933 |
| | O-Ring - Rotating (FKM) | | 701967 |
| | Seal Ring - Rotating (PTFE) | | ** |



¹ Included in Maintenance Kit

** PTFE Rotating Seal Ring is not available as a separate part.

