

BLACKMER PARTS LIST

PUMP MODELS: XRLF1.25B, XRL1.25A, XLF1.25B

XL1.25A, XLF1.5B, XL1.5A

and discontinued models XRLF1.25A, XLF1.25A, XLF1.5A,
XRLF1.25, XRL1.25, XLF1.25, XLF1.5, XL1.5

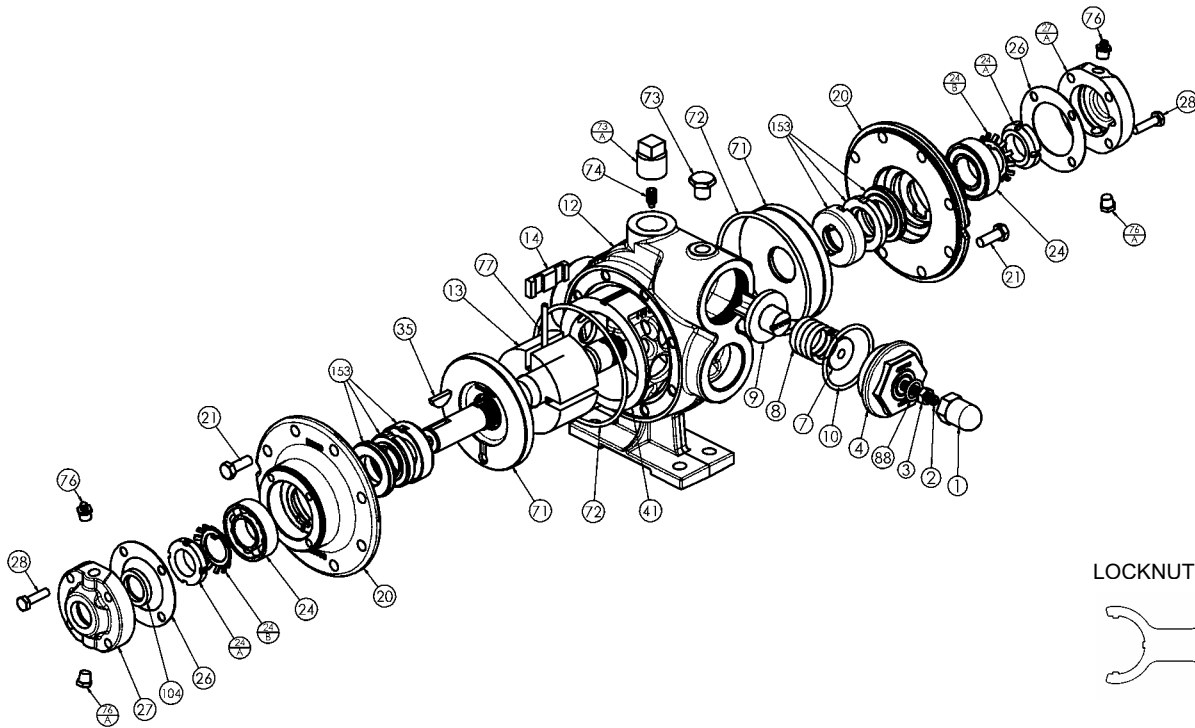
(See Instructions 107-A00 for Installation, Operation and Maintenance)

960208
Page 1 of 2

PARTS LIST
107-A01

Section
Effective
Replaces

107
August 2003
February 2003



Ref. No.	Description	Parts per Pump	Part No.	Ref. No.	Description	Parts per Pump	Part No.
1	Cap – Relief Valve (R/V)	1	413200	28	Capscrews – Bearing Cover	4-8	920080
2	Adjusting Screw – R/V	1	433909	35	Key – Shaft	1	¹ 909125
3	Locknut – Adjusting Screw	1	922923		Liner – XRL(F) 1.25		² 183003
4	Cover – R/V	1	413076	41	Liner – XL(F) 1.25	1	² 183004
7	Spring Guide – R/V	1	423955		Liner – XL(F) 1.5		² 183301
8	Spring – R/V (20 - 50 psi)	1	471415	71	Disc	2	² 063075
	Spring – R/V (51 - 80 psi) (Std.)		471420		O-Ring – Head (FKM) (Std.)		¹ 701991
	Spring – R/V (81 - 150 psi)		471428	72	O-Ring – Head (Buna-N)	2	701918
9	Valve – R/V (Std.)	1	453079		O-Ring – Head (PTFE)		702066
	Valve – R/V (Nickel Plated)		452300	73	Gage Plug (1/4")	1	908198
10	O-Ring – R/V Cover (FKM) (Std.)	1	¹ 701970	73A	Gage Plug (3/4")	1	908225
	O-Ring – R/V Cover (Buna-N)		711924	74	Setscrew – Liner	1	922088
	O-Ring – R/V Cover (PTFE)		702084	76	Grease Fitting	2	317815
12	Casing with Feet(1.25)	1	013075	76A	Grease Relief Fitting	2	701992
	Casing with Feet(1.5)		013376		Push Rod – XRL(F) 1.25		¹ 123004
13	Rotor & Shaft Assembly, Four Vane (Includes Ref. Nos. 24A & 24B)	1	² 263076	77	Push Rod – XL(F) 1.25	2	¹ 123076
					Push Rod XL(F) 1.5		¹ 123401
14	Vane – Duravane (Std.)	4	¹ 093088	88	O-Ring – R/V Cap (FKM) (Std.)	1	¹ 701908
	Vane – Bronze		093080		O-Ring – R/V Cap (Buna-N)		701949
	Vane – Laminate		093089		O-Ring – R/V Cap (PTFE)		702074
	Vane – Extra Clearance Laminate		093091	104	Grease Seal	1	¹ 331927
20	Head	2	033073	—	Tool – Locknut	—	903090
21	Capscrews – Head	16	920276	—	Kit - Maintenance , XRL(F)1.25	—	898966
24	Ball Bearing	2	¹ 903114	—	Kit - Maintenance , XL(F)1.25	—	898968
24A	Locknut – Bearing	2	² 903534	—	Kit - Maintenance , XL(F)1.5	—	898970
24B	Lockwasher – Bearing	2	¹ 903533	—	Kit – Rebuild , XRL(F)1.25	—	899066
26	Gasket - Bearing Cover	1-2	¹ 383075	—	Kit – Rebuild , XL(F)1.25	—	899068
27	Bearing Cover – Inboard	0-1	043070	—	Kit – Rebuild , XL(F)1.5	—	899070
27A	Bearing Cover – Outboard	1	043071				

¹ Included in Maintenance Kits and Rebuild Kits

² Included in Rebuild Kits

Ref. No. 73A: Earlier versions of these pumps may use a 1/4" plug (pn 908198) or 1/2" plug (pn 908215).

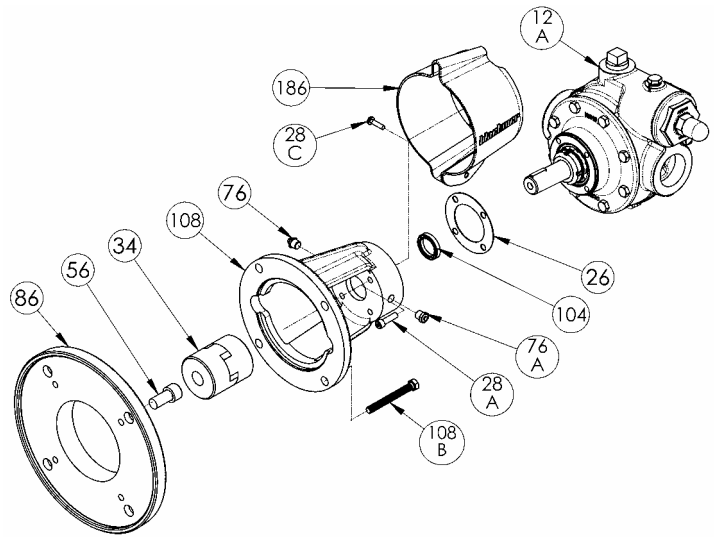
Note: earlier versions of these pumps used taper pins, which are no longer required.

Keep this parts list with Installation, Operation and Maintenance Instructions.

FLANGE "F" MOUNTING

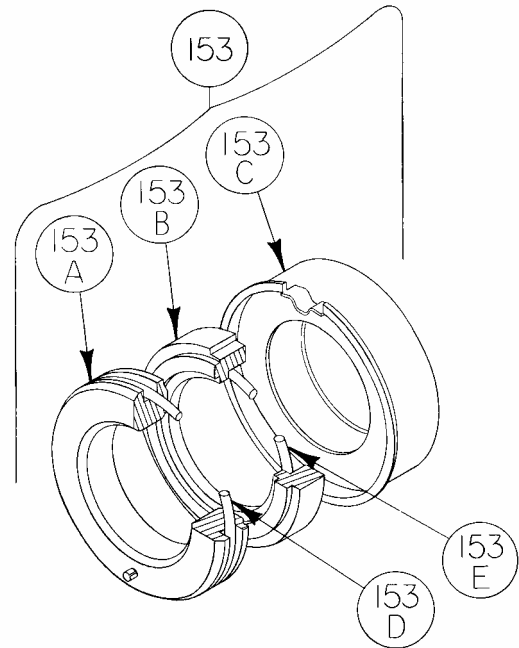
Ref. No.	Part Name	Parts Per Pump	Part No.
12A	Casing without Feet X(R)LF1.25	1	013077
	Casing without Feet XLF1.5		013377
26	Gasket - Bearing Cover	1	383075
28A	Bracket Mounting Screws	4	920101
28C	Guard Screw	1	920026
34	Coupling, Half – Pump (182TC-184TC/215C)	1	906147
	Coupling Half – Motor (56C)		906151
	Coupling Half – Motor (143TC-184C)		906147
	Coupling Half – Motor (182TC-184TC/215C)		906146
	Coupling Spider		906155
56	Capscrews – Adapter Ring Mounting	4	920480
76	Grease Fitting	1	317815
76A	Grease Relief Fitting	1	701992
86	Motor Adapter Ring (182TC, 184TC, 215C)	1	832914
104	Grease Seal	1	331927
108 *	Mounting Bracket Includes Ref. Nos. 76 & 76A	1	832912
108B	Capscrews – Bracket	4	920331
186	Guard	1	804120

* Models XRLFL1.25A, XLF1.25A, XLF1.5A, XRLFL1.25, XLF1.25 and XLF1.5 use mounting bracket 833000.



MECHANICAL SEAL

Ref. No.	Mechanical Seal Assembly	Parts Per Pump	Part No.
153	Hardened Steel Stationary Seat, Carbon Rotating Seal Face, FKM O-Rings (SVCV)- (STD)	2	¹ 333044
	Hardened Steel Stationary Seat, Carbon Rotating Seal Face, Buna-N O-Rings (SNCN)		333045
	Hardened Steel Stationary Seat with PTFE O-Ring, Carbon Rotating Seal Face with PTFE Seal Ring (SACT)		332381
	Hardened Steel Stationary Seat, Bronze Rotating Seal Face, FKM O-Rings (SVBV)		333046
	Silicon Carbide Stationary Seat with PTFE O-Ring, Carbon Rotating Seal Face with PTFE Seal Ring (LACT)		332388
	Silicon Carbide Stationary Seat, Carbon Rotating Seal Face, FKM O-Rings (LVCV)		332387
	Silicon Carbide Stationary Seat, Carbon Rotating Seal Face, Buna-N O-Rings (LNCN)		332389
	153A**		Stationary Seat (Hardened Steel)
	Stationary Seat (Silicon Carbide)	332303	
153B**	Seal Face (Carbon)	2	333053
	Seal Face (Bronze)		333062
153C**	Jacket Assembly	2	333057
153D	O-Ring – Stationary (FKM)	2	711908
	O-Ring – Stationary (Buna-N)		711916
	O-Ring – Stationary (PTFE)		702076
153E	O-Ring – Rotating (FKM)	2	701971
	O-Ring – Rotating (Buna-N)		711915
	O-Ring – Rotating (PTFE)		711961



¹ Included in Maintenance Kits and Rebuild Kits

** Mechanical Seal (Ref No. 153) is only sold as a complete assembly. Ref. No.'s 153A, 153B, 153C are not available as separate parts.



1809 Century Avenue, Grand Rapids, Michigan 49503-1530, U.S.A.
 Telephone: (616) 241-1611 / Fax: (616) 241-3752
 E-Mail: blackmer@blackmer.com / Internet: www.blackmer.com

Parts List 107-A01
 Page 2 of 2