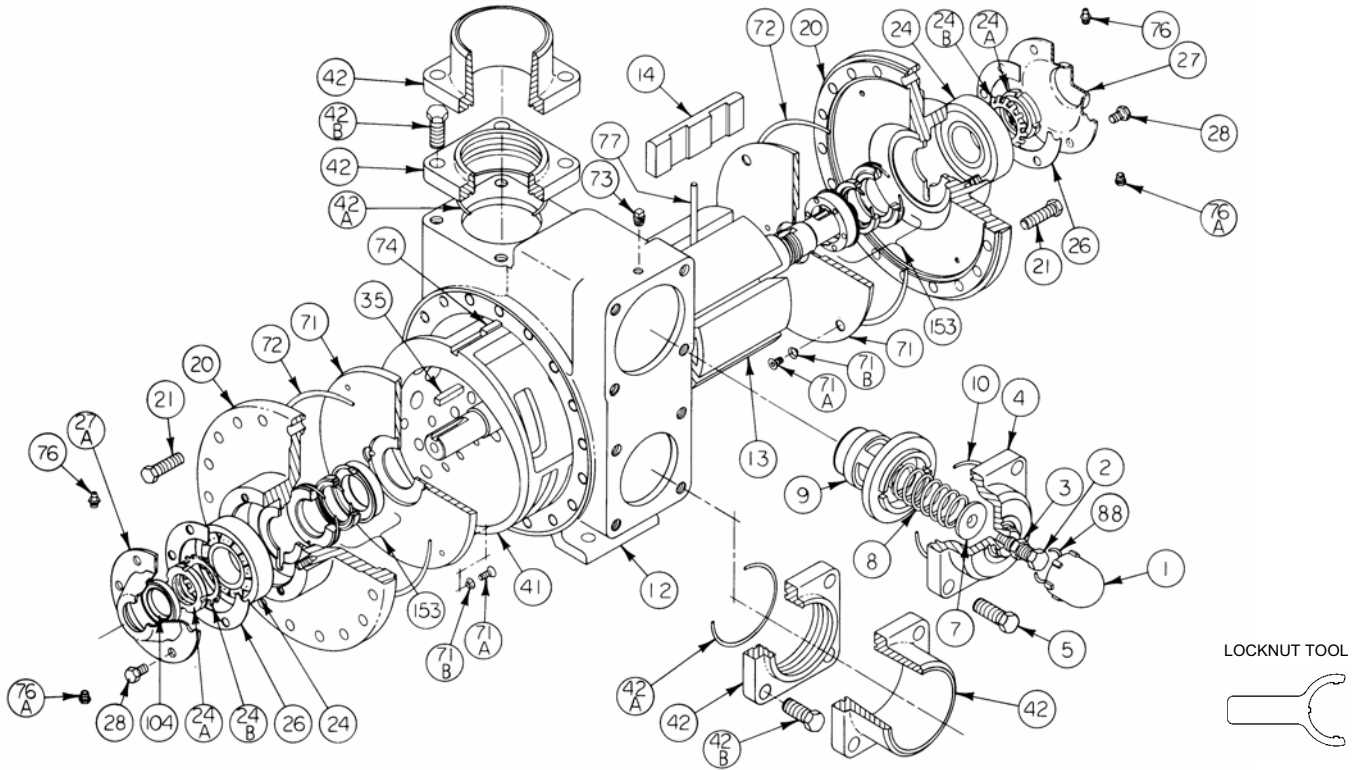


BLACKMER PARTS LIST

PUMP MODELS: XL4B DISCONTINUED MODELS: XL4, XL4A

(See Instructions 107-B00 for Installation, Operation and Maintenance)

Section 107
Effective May 2005
Replaces May 2002



Ref. No.	Description	Parts per Pump	Part No.	Ref. No.	Description	Parts per Pump	Part No.
1	Cap - Relief Valve (R/V)	1	413952	27A	Bearing Cover - Inboard	1	041815
2	Adjusting Screw - R/V	1	NOTE 3	28	Capscrews - Bearing Cover	12	920286
3	Locknut - Adjusting Screw	1	NOTE 3	35	Key - Shaft	1	¹ 909183
4	Cover - R/V	1	412001	41	Liner	1	² 182000
5	Capscrew - R/V Cover	4	920663	42	Flange - 3" NPT	1 - 2	652012
7	Spring Guide - R/V	1	426355	42	Flange - 3" Weld		652007
				42	Flange - 4" Weld		652005
8	Spring - R/V (35 - 50 psi)	1	NOTE 3	42A	O-Ring - Flange (FKM) (Std.)	2	¹ 701968
	Spring - R/V (51 - 75 psi) (Std.)		NOTE 3	42A	O-Ring - Flange (Buna-N)		701937
	Spring - R/V (76 - 125 psi)		NOTE 3	42A	O-Ring - Flange (PTFE)		702101
	Spring - R/V (126 - 150 psi)		NOTE 3	42B	Capscrews - Weld Flange		920640
9	Valve - R/V	1	452001	42B	Capscrews - NPT Flange	8	920663
10	O-Ring - R/V Cover (FKM) (Std.)	1	¹ 711909	71	Disc	2	² 062039
	O-Ring - R/V Cover (Buna-N)		701946	71A	Machine Screw - Disc	8	² 920015
	O-Ring - R/V Cover (PTFE)		702100	71B	Lockwasher - Machine Screw	8	² 909634
12	Casing	1	NOTE 3	71B	Lockwasher - Machine Screw	8	² 909634
13	Rotor & Shaft Assembly**	1	² 262023	72	O-Ring - Head (FKM) (Std.)	2	¹ 702106
	EC Rotor & Shaft Assembly**		262017	72	O-Ring - Head (Buna-N)		702039
			¹ 092019	72	O-Ring - Head (PTFE)		702089
14	Vane - Duravane (Std.)	6	092008	73	Gage Plug	2	908198
	Vane - EC Bronze		092026	74	Key - Liner	1	² 182040
	Vane - Laminate		092029	76	Grease Fitting	2	317815
	Vane - EC Laminate			76A	Grease Relief Fitting	2	701992
20	Head	2	032039	77	Push Rods	3	¹ 122005
21	Capscrews - Head	36	920532	88	O-Ring - R/V Cap (FKM) (Std.)	1	¹ 701982
				88	O-Ring - R/V Cap (Buna-N)		701926
24	Ball Bearing (Std.)	2	¹ 903172	88	O-Ring - R/V Cap (PTFE)		702099
	Roller Bearing †		903163	104	Grease Seal	1	¹ 331908
24A	Locknut - Bearing	2	² 903541		Tool - Locknut		903092
24B	Lockwasher - Bearing	2	¹ 903542		Kit - Maintenance		898965
26	Gasket - Bearing Cover	2	¹ 385125		Kit - Rebuild		899065
27	Bearing Cover - Outboard	1	041817				

¹ Included in Maintenance Kit and Rebuild Kit

² Included in Rebuild Kit

Note 3 - See Table on other side for proper parts.

** Includes Ref. Nos. 24A & 24B. EC = Extra Clearance

Keep this parts list with Installation, Operation and Maintenance Instructions.

† Optional Spherical Roller Bearing for pressures above 100 psi.

MECHANICAL SEALS

Ref. No.	Part Name	Parts Per Pump	Part No.
153*	Mechanical Seal Complete - (Std.) Hardened Steel Stationary Seat, Carbon Seal Face, FKM O-Rings. (SVCV)	2	¹ 332054
	Mechanical Seal Complete - Hardened Steel Stationary Seat, Carbon Seal Face, Buna-N O-Rings. (SNCN)		332050
	Mechanical Seal Complete - Hardened Steel Stationary Seat, PTFE O-Ring, Carbon Seal Face w/ PTFE Seal Ring. (SACT)		332073
	Mechanical Seal Complete - Hardened Steel Stationary Seat, Bronze Seal Face, FKM O-Rings. (SVBV)		332029
	Mechanical Seal Complete - Silicon Carbide Stationary Seat, PTFE O-Ring, Carbon Seal Face w/ PTFE Seal Ring. (LACT)		332049
	Mechanical Seal Complete - Silicon Carbide Stationary Seat, Carbon Seal Face, FKM O-Rings. (LVCV)		332048
	Mechanical Seal Complete - Silicon Carbide Stationary Seat, Carbon Seal Face, Buna-N O-Rings. (LNCN)		332030
153A**	Stationary Seat (Hardened Steel)	2	332005
	Stationary Seat (Silicon Carbide)		332047
153B**	Rotating Seal Face (Carbon)	2	331867
	Rotating Seal Face (Bronze)		331866
153C**	Jacket Assembly	2	331886
153D	O-Ring - Stationary (FKM)	2	701921
	O-Ring - Stationary (Buna-N)		701934
	O-Ring - Stationary (PTFE)		702056
153E	O-Ring - Rotating (FKM)	2	701962
	O-Ring - Rotating (Buna-N)		711912
	Seal Ring - Rotating (PTFE)		701963

¹ Included in Maintenance Kit and Rebuild Kit

** Mechanical Seal Ref. No. 153 is only sold as a complete assembly.

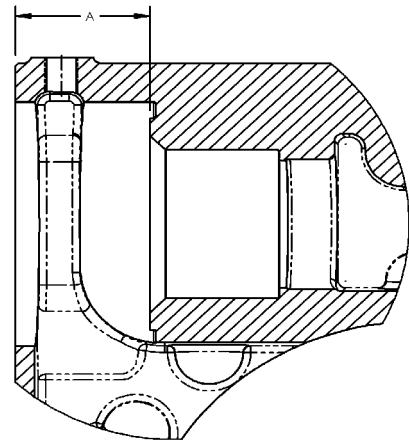
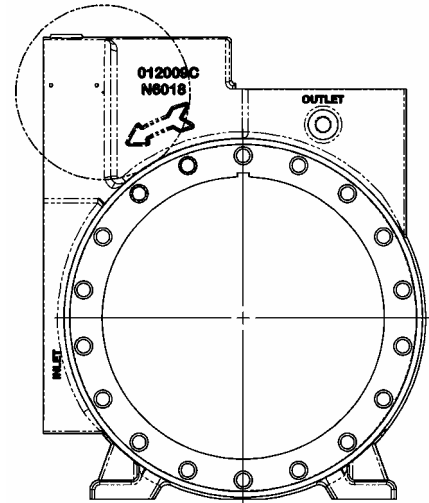
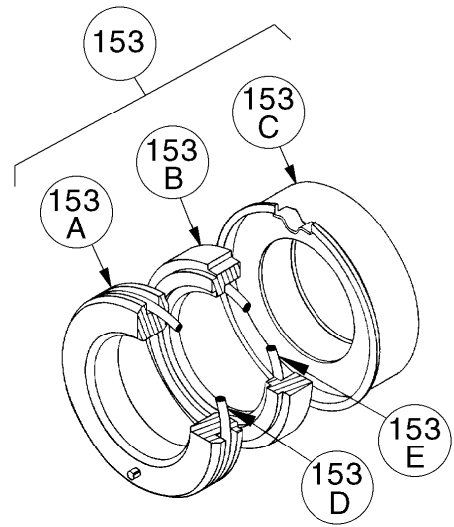
Ref. Nos. 153A, 153B, 153C are not available as separate replacement parts.

Use the table below to determine the proper parts for each model.

Ref. No.	Part Name	Parts Per Pump	XL4B	Discontinued XL4, XL4A
			Part No.	Part No.
2	Adjusting Screw - R/V	1	436310	436307
3	Locknut - Adjusting Screw	1	432039	436355
8	Spring - R/V (35-50 psi)	1	472003	476303
8	Spring - R/V (51-75 psi)	1	472009	476309
8	Spring - R/V (76-125 psi)	1	472004	476304
8	Spring - R/V (126-150 psi)	1	472039	476305
12	Casing	1	012009	012000

Use Dimension 'A' as shown in the drawing to determine the pump model number. The pump model number will also be shown on the nameplate.

Model	Dim 'A'	
XL4B	2.19 in.	5.56 cm.
XL4, XL4A	1.75 in.	4.45 cm.



1809 Century Avenue, Grand Rapids, Michigan 49503-1530, U.S.A.

Telephone: (616) 241-1611 / Fax: (616) 241-3752

E-Mail: blackmer@blackmer.com / Internet: www.blackmer.com

Parts List 107-B02

Page 2 of 2