



GASBOY

MODELS 25, 26, 27, 28 & 250

INSTALLATION AND

PARTS LIST

031991

REV. 09/11/03

INSTALLERS - IMPORTANT

In addition to installation information, this manual contains warnings, safeguards and procedures on the use and care of the Gasboy pumps. Please leave this manual with the pump owner after the installation is complete.

Copyright 2003 by Gasboy International LLC All rights reserved.

The information in this document is confidential and proprietary. No further disclosure shall be made without permission from Gasboy International LLC Gasboy International LLC believes that the information in this document is accurate and reliable. However, we assume no responsibility for its use, nor for any infringements of patents or other rights of third parties resulting from its use. We reserve the right to make changes at any time without notice.

GASBOY INTERNATIONAL LLC LANSDALE, PA

IMPORTANT WARNINGS AND SAFEGUARDS

Gasoline and petroleum products are flammable. To avoid injury or death to persons or damage to equipment or property, follow these listed warnings and other warnings and precautions outlined in this manual when installing, using, or working around this equipment. Check with GASBOY Technical Services for compatibility of liquids with pump materials.

TURN OFF AND LOCK OUT ALL POWER TO PUMP BEFORE PERFORMING SERVICE, MAINTENANCE OR IN THE EVENT OF A FUEL SPILL.

All products must be installed by a qualified installer and used in conformance with all building, fire, and environmental codes and other safety requirements applicable to its installation and use, including, but not limited to, NFPA 30, NFPA 30A, NFPA 395 & NFPA 70. A qualified installer is familiar with fuel systems installations under the above stated building, fire, and environmental codes and other safety requirements for the particular type of installation.

This product is only part of a fuel dispensing system and additional equipment and accessories, such as, but not limited to, breakaway connectors, shear valves, pressure regulators, flow limiters, and other safety devices may be necessary to meet the applicable codes.

For maximum safety, we recommend that all employees be trained as to the location and procedure for turning off power to the entire system. Instructions regarding proper operation of the equipment along with the appropriate safety warnings should be posted in plain view at the fuel island.

Before performing service or maintenance (including changing of fuel filters or strainers) or in the event of a fuel spill, turn off and lock out all power to the system. In battery-powered pumps, disconnect power source. In submersible pump applications, turn off and lock out power at the master panel and close any impact valves to the submersible pump and any other dispensers which use that submersible pump. AC power can feed back into a shut-off dispenser when dispensers share a common submersible pump or starter relay. Also block islands so no vehicles can pull up to the dispenser when the dispenser is being worked on.

DO NOT use Teflon tape for any pipe threads in the product.

DO NOT use consumer pumps for pumping fuel or additives into aircraft.

DO NOT use commercial pumps for direct fueling of aircraft without filters and separators necessary to ensure product purity.

DO NOT use where sanitary design is required (for food products for human consumption) or with water-based liquids.

DO NOT smoke near the pump or when using the pump.

DO NOT use near open flame or electrical equipment which may ignite fumes.

DO NOT permit the dispensing of gasoline or other petroleum products into a vehicle with its motor running.

DO NOT permit the dispensing of gasoline or other petroleum products into unapproved containers or into approved containers in or on vehicles including trucks. All containers must be filled on the ground to prevent static discharge. Always use Approved and Listed hoses and nozzles with electric pumps and dispensers.

DO NOT block open the nozzle in any manner. Nozzles shall conform to UL and NFPA code requirements for attended or unattended service.

DO ensure that the pump is equipped with proper filters based on the product being dispensed and its intended use.

DO wear safety goggles and protective clothes when dispensing any liquid which may be potentially harmful or hazardous.

DO keep all parts of body and loose clothing clear of belts, pulleys, and other exposed moving parts at all times.

DO require washing and changing of clothes if fuel is spilled on a person or his/her clothing. Keep away from open flames, sparks, or people smoking.

DO provide a receptacle for catching product from pump/meter when servicing.

DO clean up product spills on the driveway. Turn off and lock out all power prior to cleanup.

DO insure pump is properly grounded.

DO insure hose is compatible with fluid being dispensed.

DO inspect hose, nozzle, and pump on a regular basis for wear, damage, or other conditions which may create a safety or environmental hazard.

DO make sure all pipe threads are properly cut and the inside reamed to remove burrs. Use UL classified gasoline-resisting compound on all joints of gasoline handling piping. Sealing compound must also be resistant to Gasohol (Ethanol and Methanol). Use gasoline-resistant pipe compound on male threads only; pipe compound used on female threads can be squeezed into the supply line where it can enter the product stream and become lodged in the pump or meter.

DO ensure that junction box covers are in place and properly tightened. Mating surfaces between the box and cover must be free of dirt, nicks, and scratches. All unused entries into the junction box must be properly plugged.

CONTENTS

Section 1	Overview	
	General Model Information	1-1
	Model Features	1-1
Section 2:	Installation	
	Installation Precautions	2-1
	Aboveground Tanks (Models 25-28)	2-2
	Direct Mount Underground Tanks (Models 25-28)	2-3
	Pedestal Mount (Models 25-28)	2-4
	Underground Tanks (Models 250)	2-5
	Suction Pump	2-5
	Supply Line	2-5
	011826 Base Layout	2-6
	Vacuum Breaker.....	2-7
	Test Procedures.....	2-8
Section 3:	Wiring	
	Wiring Precautions	3-1
	Wiring Diagrams	3-2
Section 4:	Operation	
	General Recommendations	4-1
	Instructions	4-1
Section 5:	Maintenance and Service	
	Servicing Components	5-1
Section 6:	Parts List	
	Assembly, Model 25	6-2
	Assembly, Model 26	6-4
	Assembly, Model 27 and 28	6-6
	Assembly, Model 250, Front View	6-8
	Assembly, Model 25, Side View	6-10
	Pump and Motor Assembly, Models 25-28, and 250	6-12
	3460 Meter-Register Assembly, Models 25 and 26, and 250	6-14
	Strainer Block Assembly, Models 25-28, and 250	6-16
	Filter Assembly, Models 25 and 26	6-17
	Pulser Assembly, Model 25	6-18
	Pulser Assembly, Model 250	6-19
	Motor Mount Assembly, Model 250	6-19
	Mechanical Keytrol Breakdown, Model 250	6-20
	Float Assembly, Model 250	6-21
	Float Assembly Breakdown, Model 250	6-22
	Mounting Hardware, Models 25-28	6-24
	Vacuum Breaker Kits.....	6-25
	Pump Repair Kit 032892	6-25

OVERVIEW

GENERAL MODEL INFORMATION

The Model 25, 26, 27, 28, and 250 are compact high speed pumps designed for use by farmers, fleet operators, construction firms and others who are fueling vehicles and other equipment with large tanks. The four models differ as follows:

- Model 25 is supplied with a cabinet, meter-register, hose and nozzle.
- Model 26 has no cabinet, and is supplied with a meter-register, hose and nozzle.
- Model 27 has no cabinet and no meter-register, and is supplied with only a hose and nozzle.
- Model 28 is the base pump, no meter-register, no hose or nozzle.
- Model 250 is supplied with a cabinet, meter-register, hose and nozzle.

MODEL FEATURES

The Model 25, 26, 27, 28, and 250 pumps share the following features:

- Delivery rates up to 30 U.S. GPM, 24 Imperial GPM, 114 LPM. Maximum working pressure 50 PSI.
- Available for leaded or unleaded gasoline, diesel, or kerosene, as ordered.
- Direct-drive, vane-type pumping unit, self-priming, with piston bypass to prevent overload.
- Strainer and built-in check valve in base casting to maintain prime.
- 3/4 HP, 1725 RPM motor available standard in 115VAC/230VAC, 60 Hz., or optional 230VAC, 50 Hz.
- 4-wheel, push-button reset registers show delivery in US gallons, Imperial gallons, or liters, as ordered up to 999.9.
- Nutating disk meter with calibration screw accurately measures volume pumped.
- Hose, 1" diameter, 12' length. Additional lengths available.
- Self-closing manual nozzle, standard. Automatic nozzle available.
- Filter, optional.
- Dimensions: (Model 25) 15"H x 15"W x 11-1/2"D, approximate weight, 132 lbs; (Model 250) 42"H x 15-3/4"W x 11"D; approximate weight 188 lbs.

INSTALLATION

INSTALLATION PRECAUTIONS

All tanks and installations must conform with all building/fire codes, all Federal, State, and Local codes, National Electrical Code, (NFPA 70), NFPA 30, Automotive and Marine Service Station Code (NFPA 30A) and NFPA 395 codes and regulations.

Plan your installation carefully. Dispensing troubles, which seem to be pump-related, are frequently traced to faulty installation. Review the following list of installation **DO's** and **DON'T's** to avoid potential problems:

1. **DO** read the **WARNINGS** page at the front of this manual, preceding the Table of Contents. It contains important information regarding the safe use of your pumps.
2. **DO** install an emergency power cutoff, if the pump is used for other than personal use. In addition to circuit breaker requirements of NFPA 70 and NFPA 30A, a single control which simultaneously removes AC power from all site dispensing equipment is recommended. This control must be readily accessible, clearly labeled, and in accordance with all local codes. In order to provide the highest level of safety, we recommend that all employees be trained as to the location and procedure for turning off power to the dispensing equipment.
3. **DO** use breakaway couplings on discharge hose. While not required for tanks under 1100 gallons, use is recommended for safety reasons.
4. **DO** have the pump installed by a competent installer/electrician.
5. **DO NOT** experiment with a pump if you are not sure the installation is correct.
6. **DO NOT** overload sub- or main breaker panels.
7. **DO NOT** install any underground piping without proper swing joints. (Always use shoulder nipples, never close nipples).
8. **DO NOT** cover any lines until they have been both air- and liquid-tested.
9. **DO NOT** back-fill the tank or supply line with cinders or ashes. (Back-fill with clean sand, crushed rock, or pea gravel).
10. **DO NOT** use black iron pipe or fittings for underground installations. (Use only new galvanized or fiberglass* pipe and fittings). *Install all fiberglass pipe and fittings according to manufacturer's specifications and requirements.
11. **DO NOT** use power line wiring of inadequate capacity.
12. **DO NOT** use a circuit breaker of improper size.
13. **DO NOT** install fill pipe to tank where it can be submerged with standing water.
14. **DO NOT** use the GASBOY fuel dispensing equipment to remove water ballast from the storage tank.
15. **DO NOT** use gaskets on covers of explosion-proof type boxes. The sealing compound found around wires at various locations within conduit is a requirement of the National Electrical Code and should not be disturbed. Tighten junction box covers before replacing panels.

16. **DO NOT** use knock-out boxes or flexible conduit for installing this unit. All power and lighting wires should be run in threaded, rigid, metal conduit. All threaded connections must be drawn up tight with five (5) threads minimum engagement. Only one opening in the AC junction box is provided. At completion of the installation, it is the installer's responsibility to ensure that any unused openings are plugged.

ABOVEGROUND TANKS (MODELS 25-28)

1. Remove pump base by taking out four screws and O-ring.
2. Measure and cut suction pipe to allow 3" clearance between the bottom of the tank and end of the suction line. Tighten 1 1/4" suction pipe into the pump base using gasoline-resistant pipe compound on the male threads only.
3. Screw pump base with suction pipe attached into 2" tank flange, hand-tight. Use pipe compound on the male threads.
4. Lay the O-ring, lubricated with a small amount of grease, into the groove in the pump base. The O-ring should completely lie flat in the groove without distortion.
5. Sit the pump on the base positioning the guiding lip of the inlet flange into the recess in the pump base. Orient the pump, aligning the screw holes, so that a 90° tightening turn will position the dial face and nozzle hanger in the desired location. Tighten the four screws and turn the pump clockwise to the desired location.

NOTE: For Model 25 only: The top of the packing box contains a cloth bag with one nozzle hanger (P/N 003673) and two screws (1/4 x 20 x 3/4 oval head). Align nozzle hanger with lower half of pump handle (pump handle in off position). Insert two screws and tighten.

6. Install conduit and wiring in accordance with national and local electric codes. Use a properly sized wire (see Wire Size chart below). Make sure motor changeover switch is set to match voltage being supplied, 115 VAC or 230 VAC.

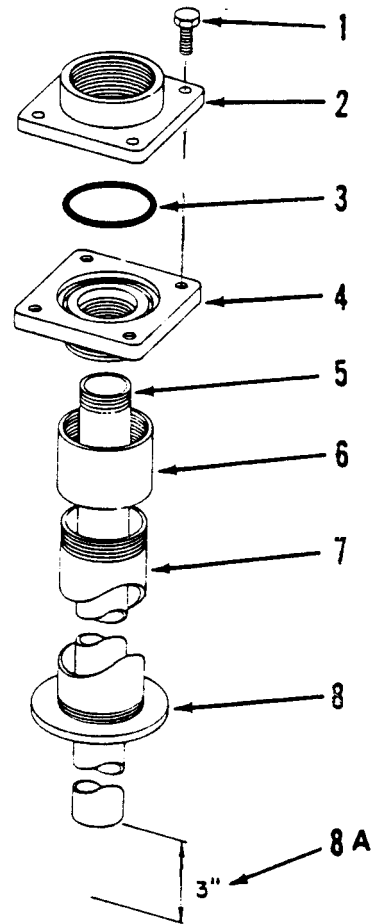
Wire Size Chart

Feet	25'	50'	100'	150'	250'
115V	14	12	10	8	6
230V	14	12	12	10	10

DIRECT MOUNT UNDERGROUND TANK (MODELS 25-28)

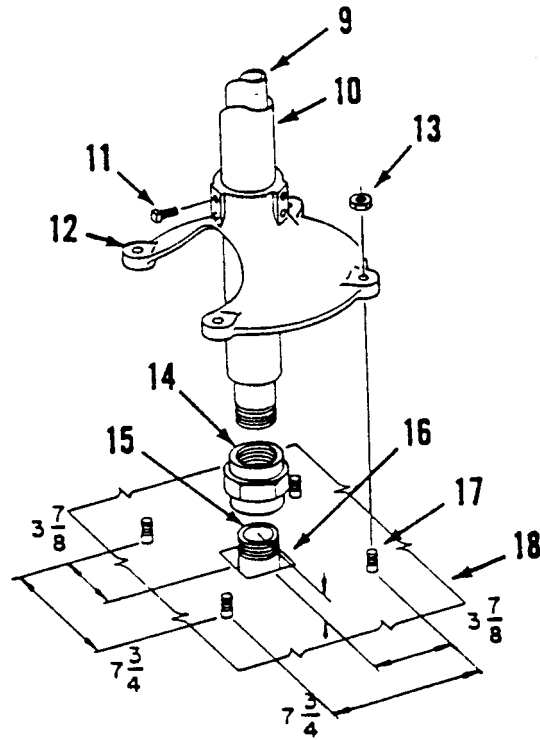
1. Attach the 2" coupling (6) to the 2" pedestal pipe (7). Screw the 2" pedestal pipe (7) into the 2" tank flange (8) using pipe compound to exclude surface water from the tank.
2. On the pump assembly remove the bottom flange (4) of the flanged union by removing the four cap screws (1). *Caution: Do not lose the O-ring (3) seal in the flange.* Do not damage or scratch the bottom surface of the top flange (2) connected to the pump assembly. This is a sealing surface.
3. Remove the plug in the bottom flange and screw 1 1/4" suction pipe (5) into the bottom flange (4) using gasoline pipe compound on the male threads. Suction pipe should be long enough to allow a 3" clearance from the bottom of the tank (8A).
4. Lower the suction pipe (5) through the 2" pedestal pipe (7) and screw the bottom flange (4) into the 2" coupling (6). Use pipe compound on the male threads of the bottom flange to exclude water. Orient the bottom flange to position the pump assembly as required.
5. Complete the installation by following steps 4 - 6 above and the test procedures later in this section.

NOTE: See **Mounting Hardware** in Section 6 for part numbers.



PEDESTAL MOUNT (MODELS 25-28)

1. On the pump assembly remove the bottom flange (4) of the flanged union (2, 3, 4) by removing the four cap screws. *Caution: Do not lose the O-ring (3) seal in the flange.* Do not damage or scratch the bottom surface of the top flange (2) connected to the pump assembly. This is a sealing surface.
2. To insure a tight suction line, use gasoline resistant pipe compound on only male threads of all joints.
3. Remove plug in the bottom flange (4) and screw 1 1/4" suction pipe (9) into the bottom flange (4).
4. Install 2" coupling (6) on the bottom flange (4). Install 2" pedestal pipe (10) in the coupling.
5. Slide pedestal base (12) up over the unthreaded end of the 2" pedestal pipe (10) (about 1/3 the way up) and tighten one or two set screws (11) enough to hold the pedestal in place.
6. Attach the top half of the union (14) to the 1-1/4" x 22-1/2" suction pipe (9). Attach the bottom half of the union to the 1 1/4" suction pipe from the tank (15). When constructing the island (18), provide clearance (16) around the suction pipe (15). Fill cavity with dry sand. Locate anchor bolts as shown.
7. Connect the assembled pedestal at the union (14). Orient the bottom flange (4) to the desired pump position and tighten the union. Slide the base (12) (P/N 003055) down over the anchor bolts (17). Tighten the six set screws (11) (P/N 053320) and the four anchor bolts (17).
8. Complete the installation by following steps 4 - 6 above listed under **Aboveground Tanks**. Also follow the test procedures later in this section.



*NOTE: See **Mounting Hardware** in Section 6 for part numbers.*

UNDERGROUND TANKS (MODEL 250)

When constructing the pump island for the dispensing equipment, be sure to extend the island excavation beyond the depth of the frost line. Leave open an area from the inside edge of the unit's base as shown on the specific base layout. Unless required by local regulations, **do not** cement the pipes and conduits into the island. The open area within the base will provide access for future servicing of the fittings, check valve and conduit assemblies. Fill in the boxed-in section with dry sand to keep condensation in the pump housing to a minimum and to help prevent fogging of the totalizer window.

Secure the pump/dispenser to the island using anchor bolts through the two mounting holes, which are 13 inches apart and are indicated on each base layout by an **X**. If the dispensing unit is not securely fastened to the island, supply line leaks at unions and pipe joints may occur. Use one of two types of bolts to anchor the pump to the island. Use two (2) 1/2" x 5" long machine bolts imbedded in the concrete, or, to meet minimum UL and API requirements for universal interchangeability of pumps, use two 1/2" x 3 1/2" long lag screws with 2" long expansion shields.

Suction Pump

The pump and the tank should be located close to each other with as few changes in direction of the supply line, as possible. This reduces the possibility of vaporization (gasoline only), attains the highest possible flow rate, and results in a lower installation cost. Avoid long supply lines and excessive vertical lifts. The dynamic lift for this unit is rated at 12 feet for gasoline and 13 feet for diesel and can vary according to conditions of the installation and fuel temperature.

Supply Line

Use new galvanized or fiberglass (see note) pipe, 1-1/2" minimum diameter. When installing a Model 250, use a minimum of 2" diameter supply pipe to obtain the highest possible flow rate and to reduce the possibility of vaporization (gasoline only).

NOTE: Fiberglass pipe is to be installed according to manufacturer's specifications and requirements.

Be sure both the pipe and the tank are clean. Foreign matter entering the pump can cause extensive damage. Obstructions in the supply line can create pump problems and reduced flow rate.

Make sure all pipe threads are properly cut and the inside reamed to remove burrs. Use UL-listed gasoline-resistant compound on all joints of gasoline handling piping. Sealing compound must also be resistant to Gasohol (Ethanol and Methanol). **Do not** use Teflon Pipe Sealing Tape. Use gasoline-resistant pipe compound on male threads only; pipe compound used on female threads can be squeezed into the supply line where it can enter the product stream and become lodged in the pump or meter. Install swing joints under the pump and at the tank to avoid breaks in the supply line from settling or frost heave.

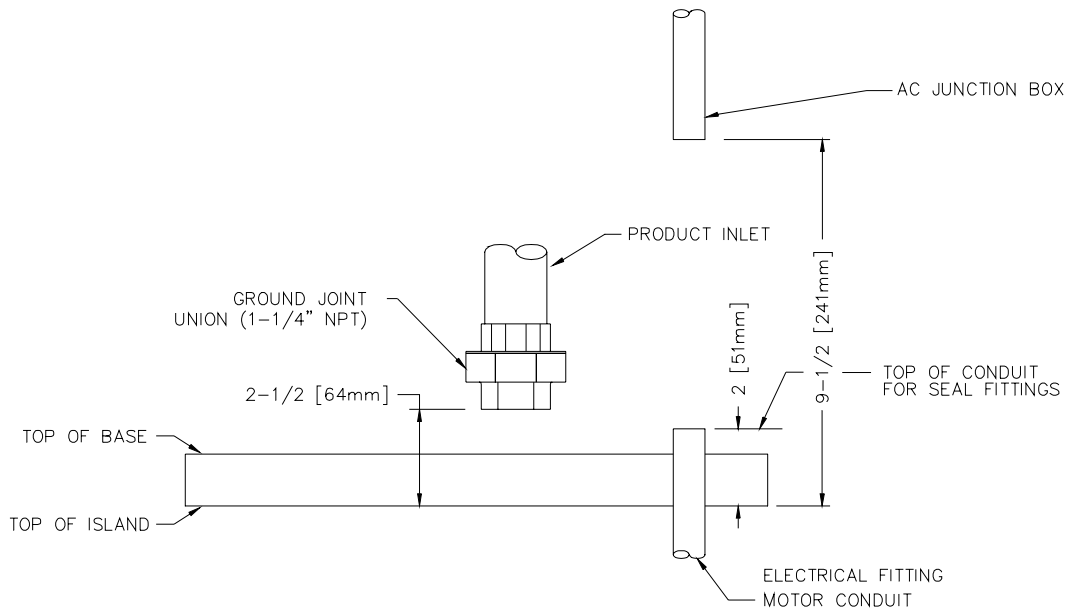
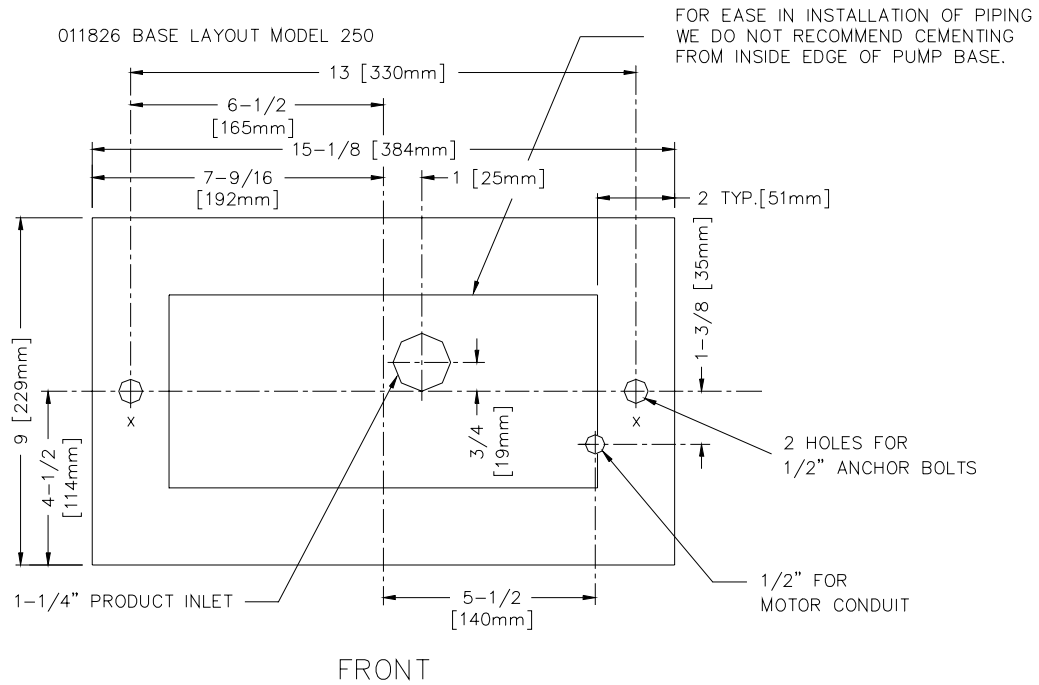
To avoid product delivery problems on suction pumps, be sure there are no traps in the supply line. Supply lines, for both suction pumps and submersible pumps, should go straight down beneath the pump to a point 18 inches below the ground level and pitch at a rate of 1/8 inch per foot from there down to the storage tank. The supply line should be as short and direct as possible with swing joints at all turns. Support the horizontal run of pipe at 10-foot intervals to maintain pitch and prevent traps. Do not use wood as pipe supports.

New EPA regulations require that only one check valve be used per supply line and located directly below, and as close as practical to the suction pump. Do not use spring-loaded or union check valves since these will unnecessarily reduce the flow rate and contribute to the reduction of atmospheric pressure necessary to keep gasoline in a liquid state.

Upon completion of installation, all liquid-carrying lines must be checked for leaks.

011826 BASE LAYOUT

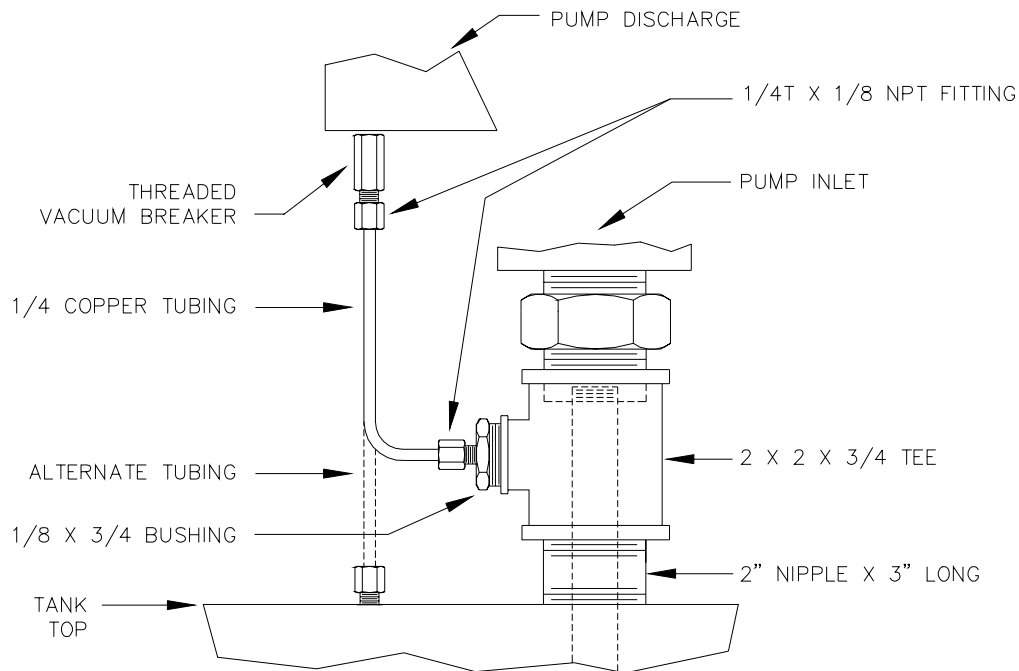
Model 250



VACUUM BREAKER

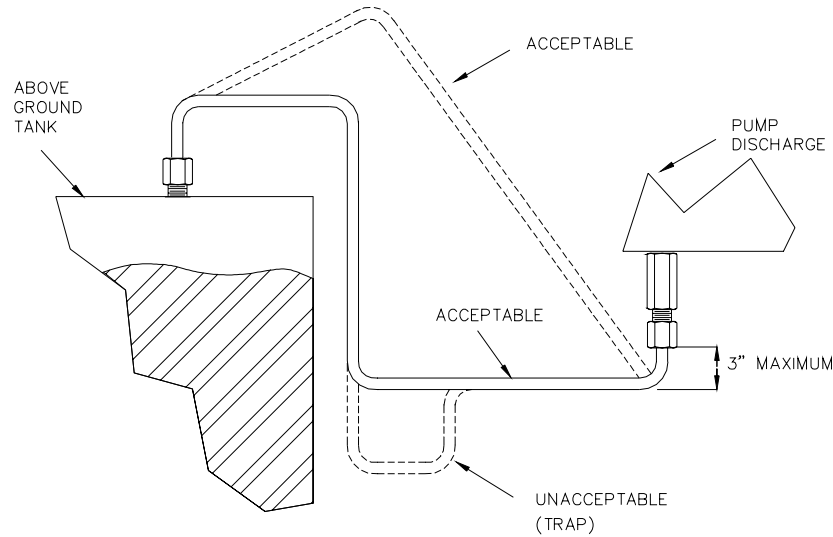
A vacuum breaker tubing kit can be used with any 20 Series pump. The vacuum breaker is used to break a siphon should the nozzle drop below the fluid level in the tank while the pump is stuck in the open position. GASBOY recommends that the vacuum breaker be tubed back to the tank.

The illustration below shows two methods for installing tubing for the vacuum breaker. In all instances, the vacuum breaker must be tubed (using 1/4" tubing) to the vapor space at the top of the tank; if the tube is installed below the fluid level of the tank, the ability to break vacuum and prevent siphoning will be lost. Using the illustrated methods, the tube end may terminate into the annular vapor space between the 1" suction pipe and the 2" mounting pipe, or into an opening in the top of the tank. All components shown are provided when you order the kit, P/N 032797.



NOTE: *Tubing can be piped to any available opening on top of tank. Use reducer bushings as required.*

The illustration on the next page shows vacuum breaker tubing for installations where the pump is installed below the fluid level of the tank. For these installations, the tubing must run directly to the tank top. The tubing must be horizontal or must slope either toward the pump or the tank so there are no traps or low spots. Traps or low spots can severely affect vacuum breaker performance. Tubing length should not exceed eight feet.



NOTE: *Tubing can be piped to any available opening on top of tank. Use reducer bushings as required.*

Testing the Vacuum Breaker

1. Charge tubing completely with fluid.
2. Turn on pump and run for several minutes to purge any air from the system.
3. Turn off pump.
4. With nozzle at ground level and discharging into a container, open nozzle. A small quantity of fluid (several cups) should drain and then stop.

TEST PROCEDURES

1. Before conducting any operational test, make sure there is no water in the tank. Do not use the GASBOY pump to pump water.
2. After installing the pump, hose and nozzle, take the nozzle out of the boot. Turn the start handle to ON and make a short delivery to prime the pump.
3. Make several deliveries to determine if the pump is operating satisfactorily, including a rate of flow (gpm) and accuracy test. It is the responsibility of the installer to make any accuracy (calibration) adjustments required to match the installation conditions.
4. Take voltage readings for the pump on start up and while making a delivery. Any voltage reading less than 10% of the rated voltage can be considered a low voltage condition and should be corrected to insure satisfactory service.
5. After completing the above tests, check the strainer to determine that the product being withdrawn from the tank is clean.

Section 3

WIRING

WIRING PRECAUTIONS

The quality of the electrical installation is a major factor in maintaining proper safety levels and providing trouble-free operation of your GASBOY pump. To assure a quality installation, follow these rules:

1. All wiring must be installed to conform with all building/fire codes, all Federal, State, and Local codes, National Electrical Code, (NFPA 70), NFPA 30, Automotive and Marine Service Station Code (NFPA 30A), and NFPA 395 codes and regulations.
2. Use only threaded, rigid, metal conduit.
3. Use only UL-approved insulated gasoline- and oil-resistant stranded copper wiring of the proper size.
4. Wire connections should be tightly spliced and secured with a wire nut; close off the open end of the wire nut with electrical tape.
5. The line to the motor should be on a separate circuit and installed on a 20 to 30 AMP breaker depending on the motor size and/or the voltage setting.
6. Install an emergency power cutoff. In addition to circuit breaker requirements of NFPA 70 and NFPA 30A, a single control which simultaneously removes AC power from all site dispensing equipment is recommended. This control must be readily accessible, clearly labeled, and in accordance with all local codes.

In a fuel management system application, the EMERGENCY STOP and STOP keys on the console and/or the optional EMERGENCY STOP button on the Island Card Reader do not remove AC power from equipment and under certain conditions, will not stop product flow.

In order to provide the highest level of safety to you, your employees, and customers, we recommend that all employees be trained as to the location and procedure for turning off power to the entire system.

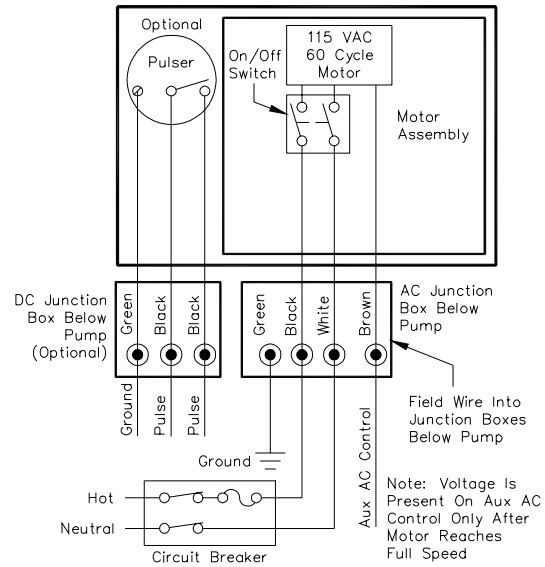
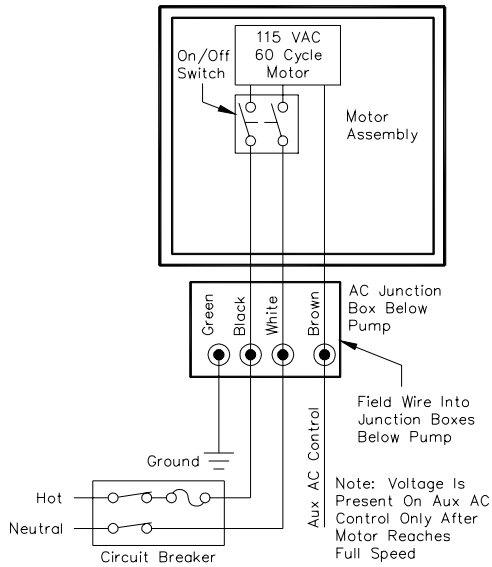
WARNING:

To reduce the risk of electrical shock when servicing, turn off all power to the pump.

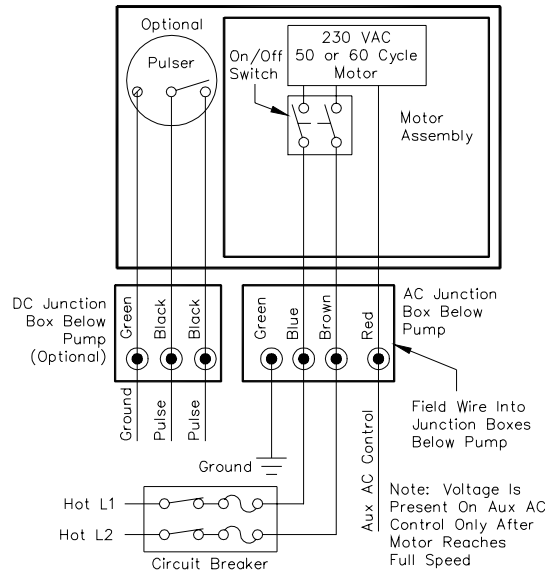
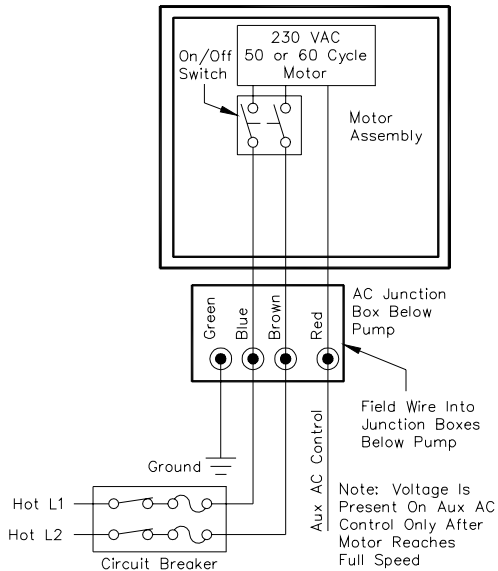
7. Have the pump/dispenser installed by a competent installer/electrician.

WIRING DIAGRAMS

115VAC Wiring - Models 25 to 28 & 250 (left) ; Model 25 or 250 with Pulser (right)



230VAC Wiring - Models 25 to 28 & 250 (left) and Model 25 or 250 with Pulser (right)

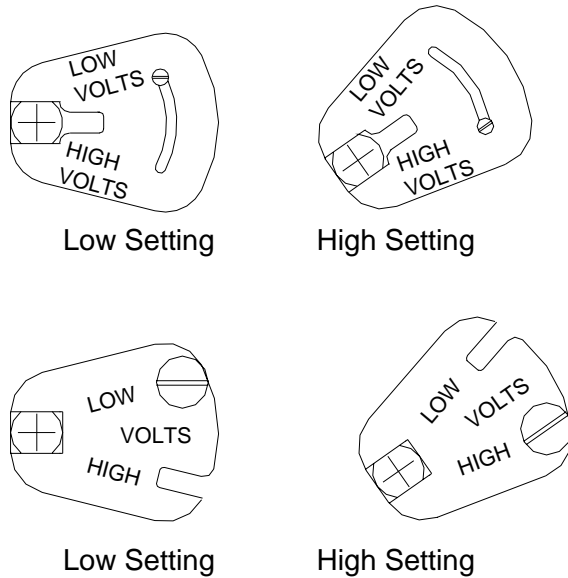


NOTE FOR 230V MOTORS: Some motors may contain different wire colors than those shown. In this case, Hot is Black, Neutral is White and Aux AC Control is Brown.

1. All wiring and conduit runs must conform with all building/fire codes, all Federal, State, and Local codes, National Electrical Code, (NFPA 70), NFPA 30, and Automotive and Marine Service Station Code (NFPA 30A) codes and regulations.
2. Wire connections should be tightly spliced and secured with a wire nut. Close off the end of the wire nut with electrical tape.

3. The Aux AC Control Lead is shipped capped from the factory. When used, it connects to a solenoid valve or fuel management system. Do not connect this wire without first checking the ON voltage of this line to ascertain compatibility with the equipment being connected.
4. Pulsar wiring must be 18AWG and installed in metal conduit separate from all AC wiring. It cannot share a common junction box, wiring trough or conduit with any AC wiring.
5. To connect a 115VAC/230VAC, 60 Hz motor to a 230VAC power source, the internal motor switch needs to be changed from the **LOW VOLTS** setting to the **HIGH VOLTS** setting. You might have a plate with either a slot or two holes (one for the LOW volts setting and the other for the HIGH volts setting).

If you have a plate with a slot, remove the screw, and move the plate all the way to the HIGH VOLTS end, and then, re-insert the screw. If you have a plate with two holes, remove the screw from the LOW setting hole, and move the plate so that the hole for the HIGH setting aligns with the screw hole. Then, re-insert the screw.



OPERATION

GENERAL RECOMMENDATIONS

- To obtain the maximum flow rate, use the #038380 manual-operation (OPW-311A) nozzle or the #038531 automatic (OPW-7H) shutoff nozzle. Avoid the use of nozzles with higher pressure drops than these recommended nozzles.
- Although the Series 25-28, and 250 will operate on 115 VAC current, we recommend its use with 230 VAC current for maximum efficiency and reduced chance of encountering a low voltage problem.
- Some diesel fuels congeal and clog the strainer during cold weather reducing the flow rates substantially. The standard pump is equipped with a 40 mesh strainer to prevent this. However, there is also a possibility that a pump equipped with a 100 mesh strainer for gasoline service is being used to dispense diesel fuel, in which case the strainer should be replaced.

INSTRUCTIONS

1. If pump has a push-button register, press the RESET button to reset the register to zero.
2. Remove nozzle; turn pump handle to ON position.
3. Make delivery.
4. Turn pump handle to OFF position and hang up nozzle.

NOTE: If extra length of hose is used, store hose out of the path of vehicles to prevent it from being run over.

MAINTENANCE & SERVICE

SERVICING COMPONENTS

Cover and Switch Assembly (Models 25-28)

The Model 25 cover assembly can be removed by taking out four (4) screws, holding in the reset push button and lifting the cover off. Start lever can be removed by taking out the Allen set screw and turning the start lever counterclockwise to unscrew it from the weld nut attached to the inside of the frame. Unscrewing the start handle frees the switch cam. The switch pin is attached to the switch plate with a nut and lockwasher.

When reassembling these parts, make sure that the start handle is positioned so that the set screw threads into tapped hole in start handle shaft and the start handle covers the nozzle boot opening when the pump in ON to prevent hanging up the nozzle without turning the pump OFF. Make sure also that the switch plate hits against the stop pin in both the ON and OFF positions to prevent excessive force from being applied to the switch stem.

Panel Assembly (Model 250)

The Model 250 front panel can be removed by taking out two (2) screws at the bottom of the panel and then lifting off the panel. With the panel removed, access is provided to all internal components.

Check Valve and Strainer

The built-in check valve and strainer are accessible under the strainer cover, secured with five (5) screws. The strainer should be cleaned once a year or whenever there is a noticeable slowing of the rate of delivery. The check valve should be cleaned or replaced if loss of prime is indicated by delivery of small volume of product followed by air and then full flow. The standard pump is equipped with a 40 mesh strainer for diesel fuel. A 100 mesh strainer for gasoline service is available.

Bypass Valve

Bypass valve is located under the cover secured with four (4) screws. The bypass valve does not require maintenance. If for any reason the bypass is removed be sure to assemble it into the tube with the bullet-shaped nose toward the hole and slot at the end of the tube. The assembled valve and tube should be inserted into the pump with the hole end first. The bypass valve is preset to provide the most efficient operation and is not adjustable.

Rotor, Vanes and Shaft Seal

Rotor, vanes and shaft seal can be removed by taking off pump cover held on with three screws. No maintenance is required for these parts. A shaft seal leak will be evidenced by product coming out the drain slot shown in the parts drawing at the bottom of the inner pump head.

(NOTE: Numbers in parentheses correspond to the numbers shown on the parts illustration labeled **Pump and Motor Assembly** on page 6-13) To replace shaft seal, remove rotor (3), vanes (4), both shaft keys (6) and E-ring (7). Slide spring (9) and both washers (8 & 10) off shaft. O-ring (11) will act as a brake to resist removal of brass, rotating seal ring (12). To overcome this resistance, lightly grasp brass ring with pliers and pull at the same time turning shaft back and forth with the flat blade of a screwdriver in the keyslot in the end of the shaft. Remove O-ring from brass ring and spread some grease over machined surface of ring; reinsert brass ring over shaft and press greased surface against carbon, floating seal ring (13). The carbon ring can now be withdrawn stuck to the brass ring. Do not break up the carbon ring to remove it, since some of the pieces may get lost in the pump casting and cause the rotor or measuring chamber to jam later in service. Use a bent wire as a button-hook to hook and withdraw O-ring (14) from recess in back of pump cavity. Install new seal group (5) in reverse order. Make sure recess in back of pump cavity is clean and that O-ring (14) is firmly seated and not twisted in this recess.

NOTE It is critical that the seal part mating surfaces remain clean and dry. Do not touch or allow oil of any type to contaminate the carbon or brass mating surfaces. If the seal inadvertently becomes contaminated, both mating surfaces must be carefully cleaned with a lint-free cloth and methyl alcohol.

Slinger Ring

The slinger ring throws any product leaking past the seal away from the shaft and prevents product from entering into the motor. When replacing the rotor and the vanes, seat Woodruff keys firmly in key ways in the shaft, align rotor key ways with keys and assemble rotor to shaft with larger diameter opening toward seal. Insert vanes in rotor so that beveled edge of vane matches contour of rotor. Make sure O-ring lies flat in groove of pump block; use a new O-ring if the existing ring is cut, damaged or swollen.

Bearings

If bearing in pump cover is worn or damaged replace cover; slide shaft into pump cover bearing and tighten in position with three screws.

Calibration

NOTES: This meter was redesigned causing the calibration procedure to be different depending on the age of your meter. Meters made after October 4, 1995 are referred to as new style meters; meters made before that date are referred to as old style.

This meter is for consumer use only and not for re-sale. It is not sealable by Weights and Measures.

All GASBOY meters are adjusted for accurate measure for the fuel specified within $\pm .05$ gallons at the factory. However, since the conditions of the installation can affect meter accuracy, it is the responsibility of the installer to check the meter for accuracy and make any needed adjustments.

To calibrate the meter accurately for use with both gasoline and diesel, you must change the internal cluster gear for US gallons and the drive gear for liters. The required gear is shipped with the pump in a labeled envelope. NOTE: The pump strainer should also be changed to match the product dispensed.

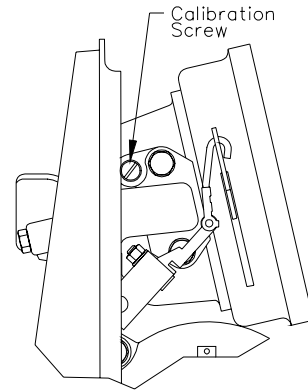
Choose the flow rate at which the meter will be used most often for the zero calibration point. For example, if the meter is being used with an automatic nozzle, calibrate with the nozzle set on the middle or top notch position, whichever is used most frequently.

Use a certified five-gallon measure with a sight glass and scale showing cubic inches over or under an exact five gallons. Fill and drain the test measure to completely wet the interior surfaces. Reset the register to zero and deliver an exact measured five gallons into the test measure at the selected flow. Read the level of the liquid in the sight glass on the scale in \pm cubic inches.

Remove cap screw (old style only), exposing the slotted head calibration screw. Use a narrow blade screw driver to turn the calibration screw clockwise to correct for plus cubic inches or counterclockwise for minus cubic inches in the test measure.

Count the number of full turns and fractional turns each time for reference in judging the number and direction of any additional turns required to calibrate the meter to exact zero.

Replace the cap screw (old style only). Deliver about 1/2 gallon through the meter before resetting to zero and retesting. Allow a ten second drain period each time the test measure is emptied to assure accurate measure. Adjust and retest until register is zeroed at desired flow.



Register

The register can be replaced as a unit by taking off the dial mask and removing two screws; reassemble reset push button and spring as shown on exploded view.

The C size measuring chamber can be removed for cleaning by taking out four (4) screws, lifting off register housing and removing three measuring chamber screw fasteners; to separate the two halves of the measuring chamber, tap the outer edge with a soft mallet - be careful not to damage the machined surface. After cleaning, the two halves will hand press together after making sure the vertical divider plate is aligned with grooves in the top and bottom half. The O-ring must lie flat in the groove in the meter housing when assembling register housing; replace this O-ring if it is damaged or swollen.

For your information, the parts list shows the number of teeth in each gear of the gear train. If for any reason, the cluster gear is replaced, use a new key; bend this new L shaped key into a U shape after inserting into groove in gear and through hole in shaft to capture this driving key in place.

To replace meter shaft seal on an old-style meter, slide O-ring over bearing like a ring on a finger; insert shaft into bearing and press this assembly into square recess in register housing. To replace meter shaft seal on a new style meter, install new nylon washer, two new oilite bearings and two new O-rings in reverse order of disassembly into bore in register housing.

Section 6

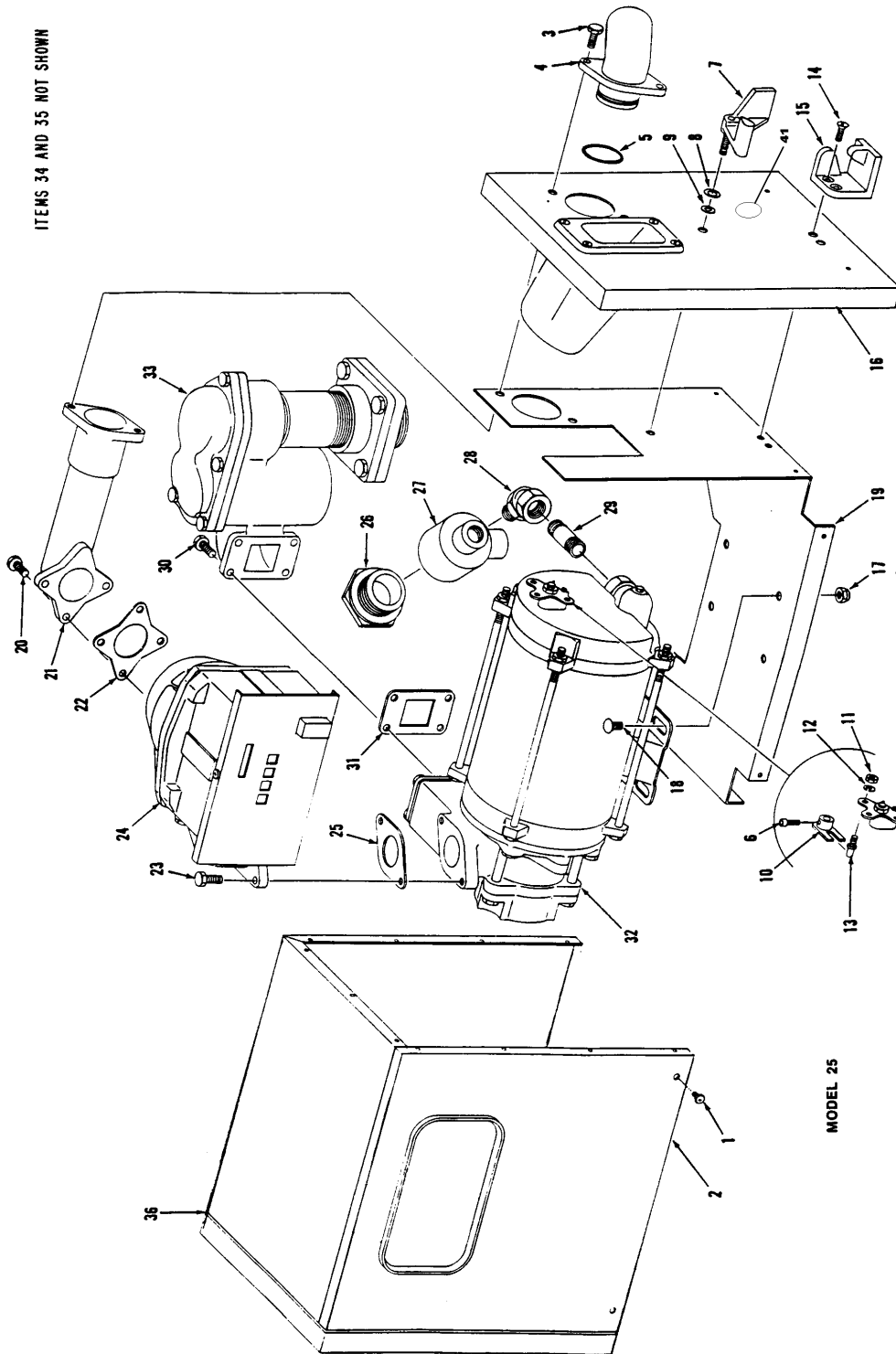
PARTS LIST

This manual lists parts information for the Model 25, 26, 27, 28, and 250 pumps. Using part numbers when ordering will expedite your order and reduce the possibility of the wrong parts being shipped. When ordering replacement parts, be sure to give the complete name and part number as shown in the appropriate parts lists. It is also helpful to supply the serial number of the equipment.

Procedures requiring disassembly of portions of the pump should be performed by competent service personnel. Do not depend upon the repair service of a general mechanic unless he is thoroughly familiar with the mechanism. GASBOY has a distributor network which services fuel dispensing equipment and management systems in every section of the country.

WARNING:

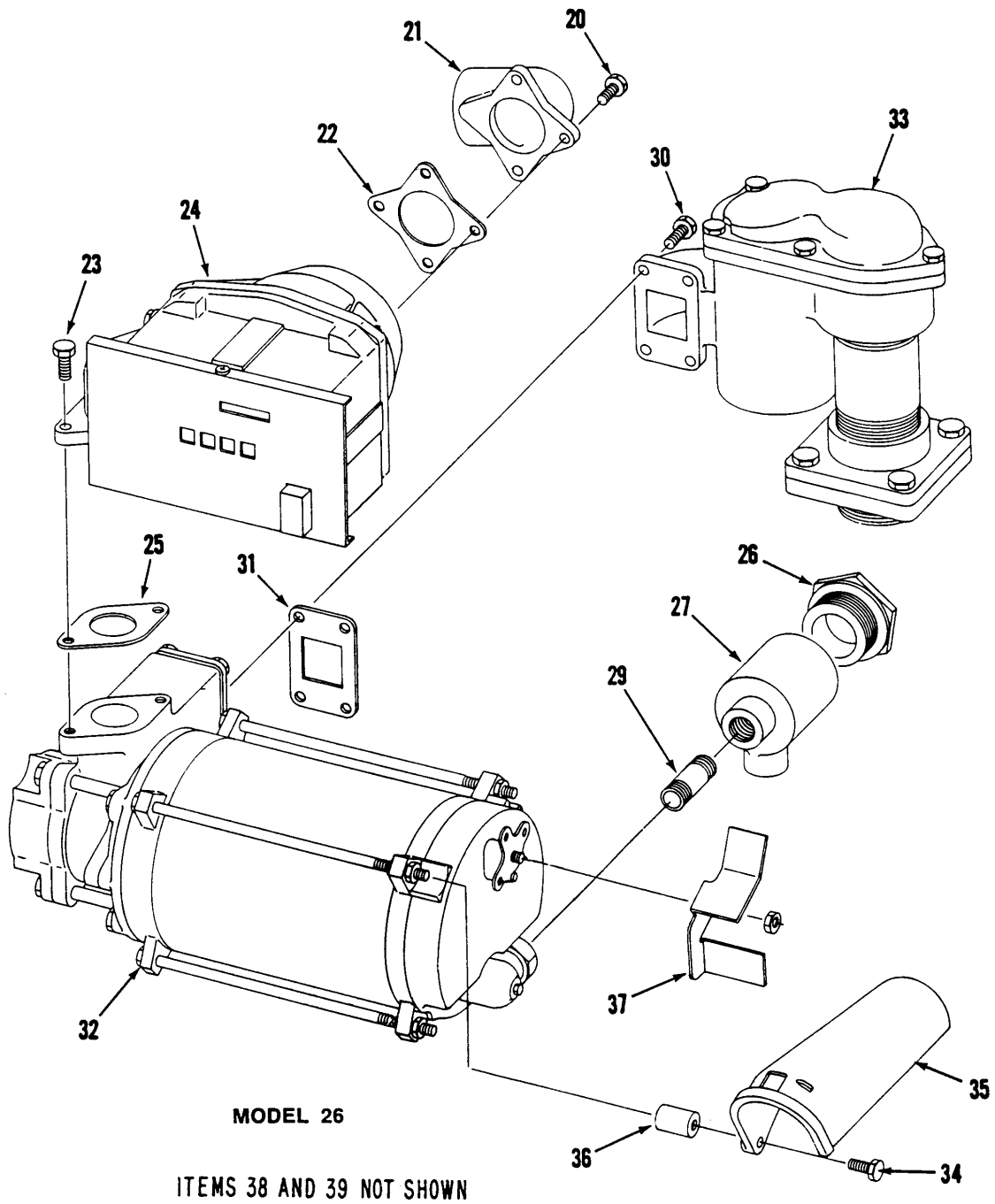
To reduce the risk of electrical shock when servicing, turn off and lock out all power to the pump.



ASSEMBLY, MODEL 25

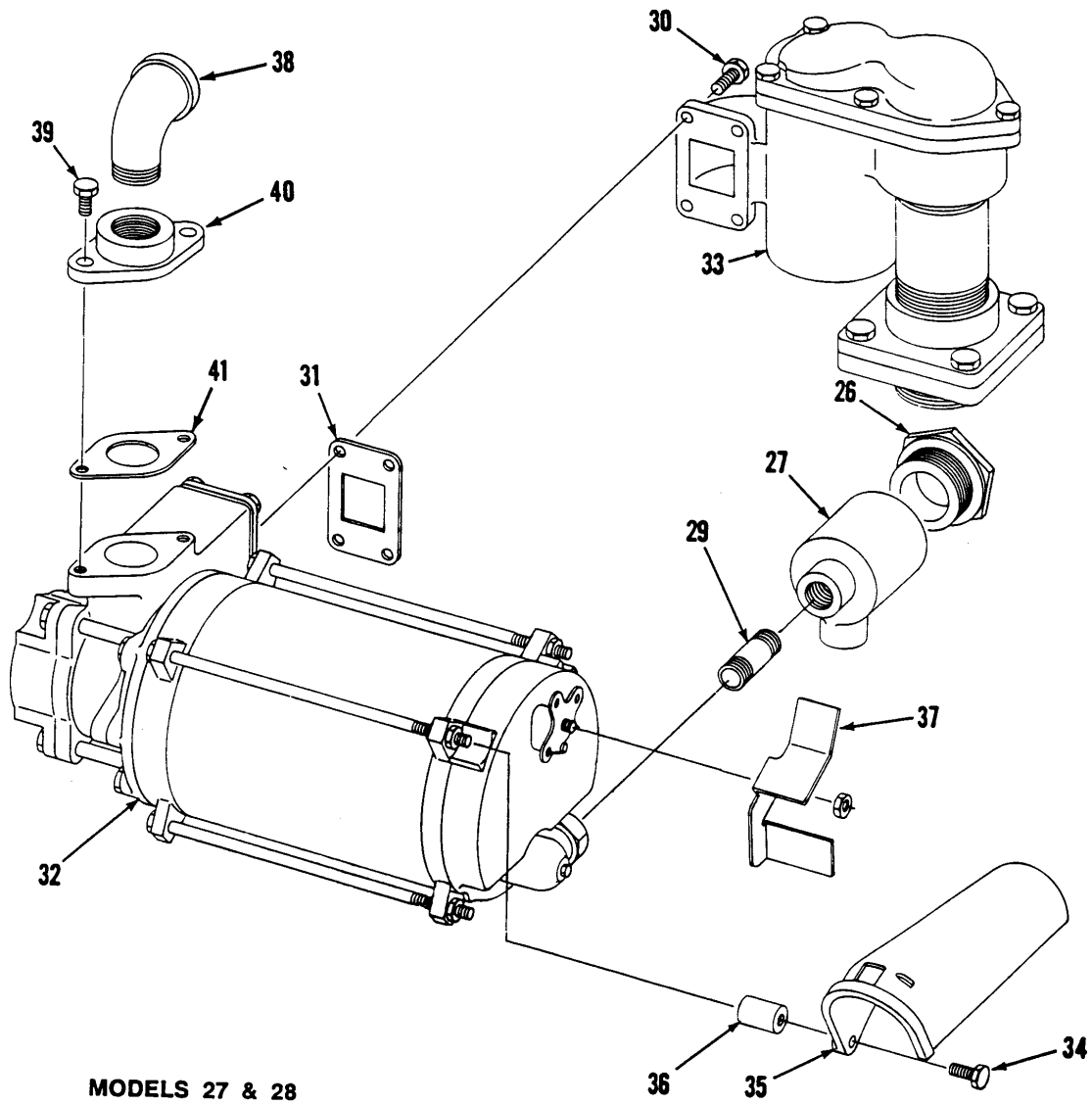
Item	Part No.	Description	Item	Part No.	Description
	089400	Model 25, U.S. Gasoline	19	026519	Frame Assembly
	089402	Model 25, U.S. Diesel	20	051900	Cap Screw, 5/16-18 x 7/8
	089401	Model 25, Liter Gasoline	21	003541	Discharge Casting
	089403	Model 25, Liter Diesel	22	026809	Gasket
	089420	Model 25, Imperial Gasoline	23	051900	Cap Screw, 5/16-18 x 7/8
	089421	Model 25, Imperial Diesel	24		Meter, Register (See <i>breakdown</i>)
1	053652	Phillips Head Screw, #8-32 x 1/2	25	026810	Gasket
2	022102	Front Cover Assembly, CRS	26	003515	Junction Box Cover
	041276	Front Cover Assembly, SS	27	003345	Junction Box
3	051895	Cap Screw, 5/16-18 x 3/4"	28	025015	Conduit Ell, 1/2 x 45
4	003647	Discharge Flange	29	021532	Conduit, 1/2 x 1-3/4
	003611	Discharge Flange w/Vacuum Breaker Hole	30	051900	Cap Screw, 5/16-18 x 7/8
5	049062	O-ring	31	026812	Gasket
6	053516	Soc. Hd. Set Screw 10-32 x 1/4 Cup	32	048010	Pump & Motor Assembly (60Hz.)
7	051072	Switch Arm Assembly		048997	Pump & Motor Assembly (50Hz.)
8	068281	Spring Washer	33	063357	Strainer Block Assembly, Gasoline
9	068020	Washer, 5/16"		063358	Strainer Block Assembly, Diesel
10	017566	Cam Assembly	34	030430	Hose, 1" x 12' (Not Shown)
11	038860	Hex Nut, 1/4"	35	038509	Nozzle, 402-Manual (Not Shown)
12	068891	Lockwasher, 1/4"		038531	Alt. Nozzle, 7H-Automatic (Not Shown)
13	042282	Pin	36	022253	Cover Assembly (Top, Back & Left Side), CRS
14	052315	Machine Screw, 1/4-20 x 5/8" (For 003673 Hanger)		041291	Cover Assembly (Top, Back & Left Side), SS
	051805	Screw (For 015139 Hanger; Not Shown)	37	065534	Vacuum Breaker Assy., threaded (Not Shown)
15	003673	Nozzle Hanger (Auto Nozzle)		066570	Vacuum breaker Assy. (Not Shown)
	015139	Nozzle Hanger (Manual Nozzle; Not Shown)	38	063209	Eccentric Stop (Not Shown)
16	041382	Right Side Panel Assembly, CRS	39	052314	Screw (Not Shown)
	041831	Right Side Panel Assembly, SS	40	012267	Bezel
17	038920	Nut, Nylok 5/16"	41	047213	Plug
18	013030	Carriage Bolt			

NOTES: *Users desiring pulser parts should see the **25 Pulser Breakdown** later in this section.*



ASSEMBLY, MODEL 26

Item	Part No.	Description
	089404	Model 26, U.S. Gasoline
	089406	Model 26, U.S. Diesel
	089405	Model 26, Liter Gasoline
	089407	Model 26, Liter Diesel
	089422	Model 26, Imperial Gasoline
	089423	Model 26, Imperial Diesel
20	051900	Cap Screw, 5/16-18 x 7/8
21	003072	Discharge Casting
	003088	Discharge Casting w/Vacuum Breaker Hole
22	026809	Gasket
23	051895	Cap Screw, 5/16-18 x 3/4
24		Meter, Register Assembly (<i>See breakdown</i>)
25	026810	Gasket
26	003515	Junction Box Cover
27	003345	Junction Box
29	021337	Conduit, 1/2 x 2"
30	051895	Cap Screw, 5/16-18 x 3/4"
31	026812	Gasket
32	048998	Pump & Motor Assembly (60 Hz.)
	048999	Pump & Motor Assembly (50 Hz.)
33	063357	Strainer Block Assembly, Gasoline
	063358	Strainer Block Assembly, Diesel
34	051895	Cap Screw, 5/16 -18 x 3/4
35	003331	Nozzle Boot
36	056967	Spacer
37	034497	Switch Plate
38	030430	Hose, 1" x 12'
39	038413	Nozzle with Hook (311-Manual)
	*003788	Hook Only
	*053151	Set Screw
	038412	Alt. Nozzle with Hook (7H-Automatic)
	*003789	Hook Only
	*053155	Set Screw
40	066534	Vacuum Breaker Assy., Threaded

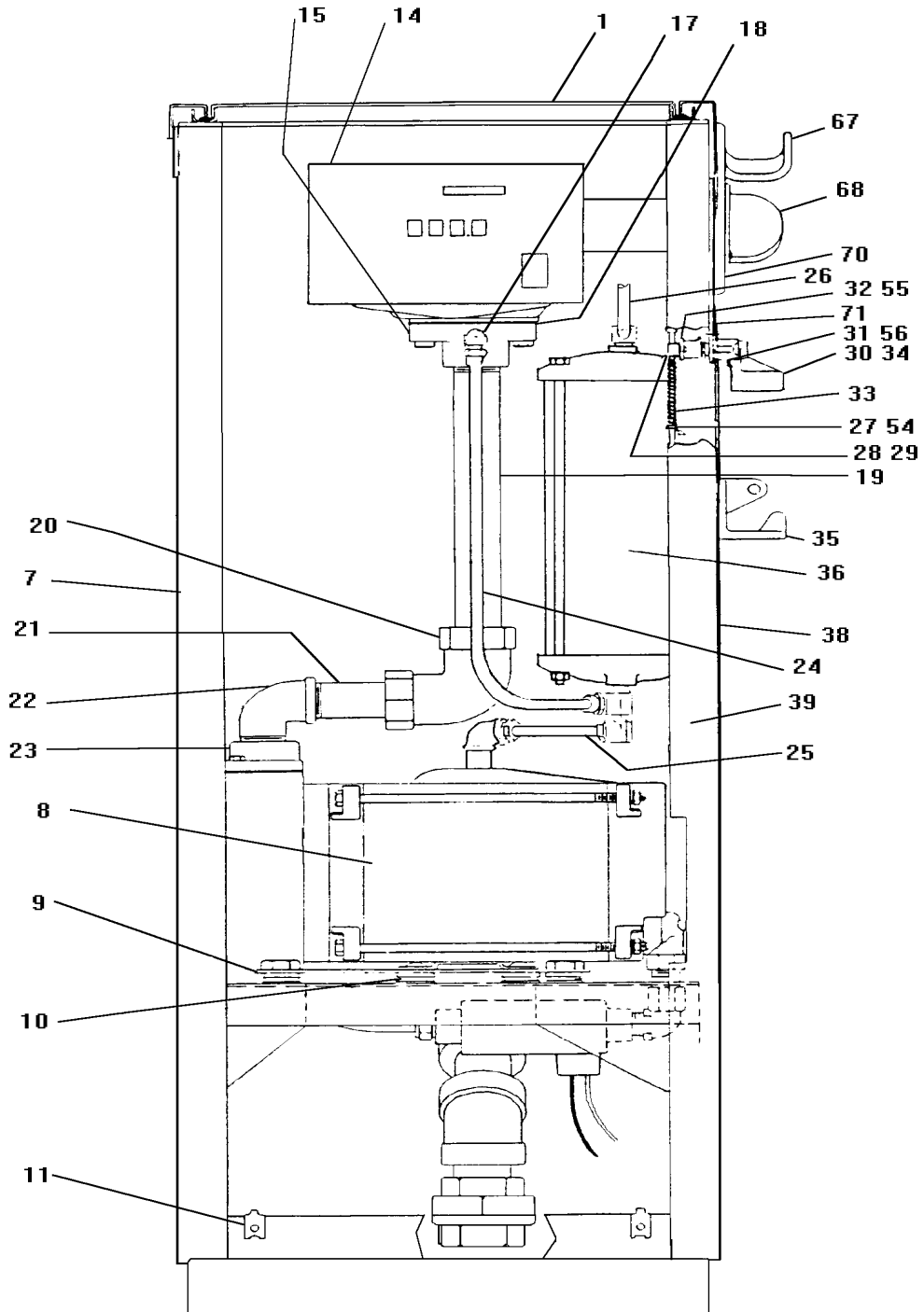


MODELS 27 & 28

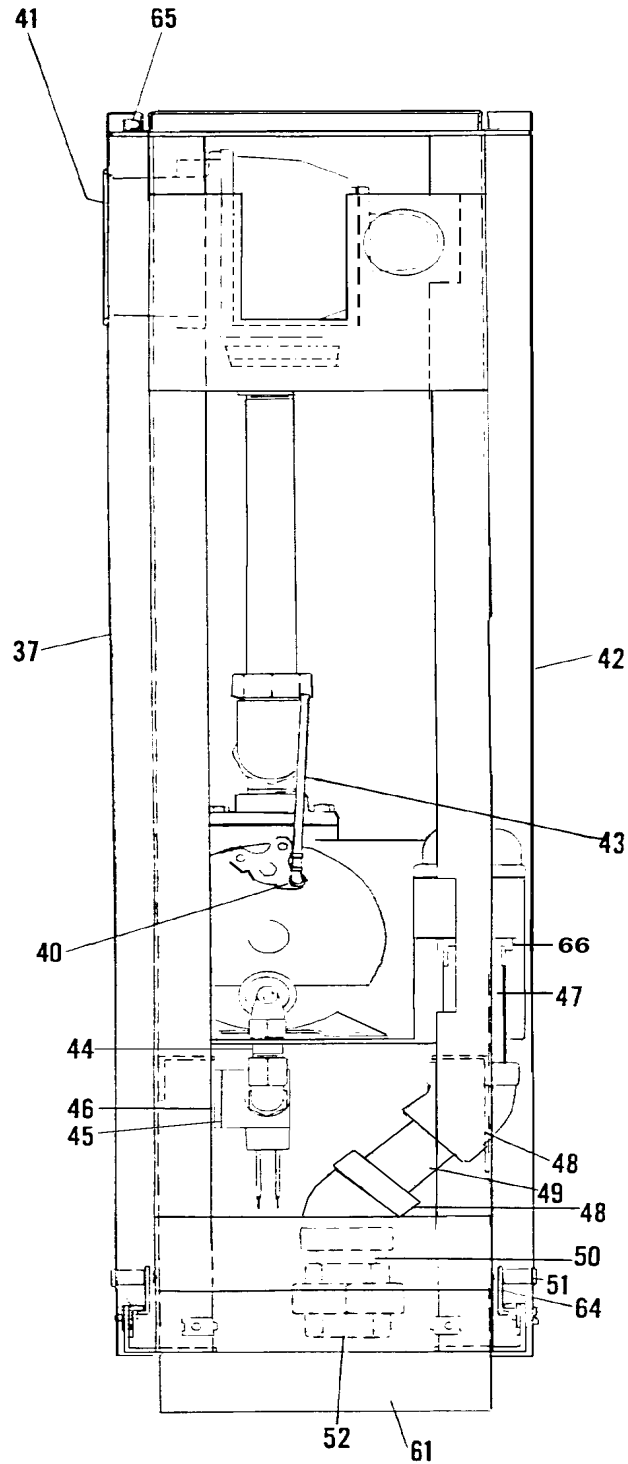
ASSEMBLY, MODEL 27 & 28

Item	Part No.	Description
	089418	Model 27, Gasoline
	089416	Model 27, Diesel
	089419	Model 28, Gasoline
	089417	Model 28, Diesel
26	003515	Junction Box Cover
27	003345	Junction Box
29	021337	Conduit, 1/2 x 2"
30	051900	Cap Screw, 5/16-18 x 7/8"
31	026812	Gasket
32	048998	Pump & Motor Assembly (60 Hz.)
	048999	Pump & Motor Assembly (50 Hz.)
33	063357	Strainer Block Assembly, Gasoline
	063358	Strainer Block Assembly, Diesel
34	051895	Cap Screw, 5/16-18 x 3/4"
35	003331	Nozzle Boot
36	056967	Spacer
37	034497	Switch Plate
38	024941	Street Ell, 1" x 90
	024933	Discharge Casting w/Vacuum Breaker Hole
39	051895	Cap Screw, 5/16-18 x 3/4"
40	003640	Flange
41	026810	Gasket
	030430	Hose, 1" x 12'
	038413	Nozzle with Hook (311-Manual)
	038412	Alt. Nozzle with Hook (7H-Automatic)
42	066534	Vacuum Breaker Assy., Threaded (Not Shown)

ASSEMBLY, MODEL 250, FRONT VIEW

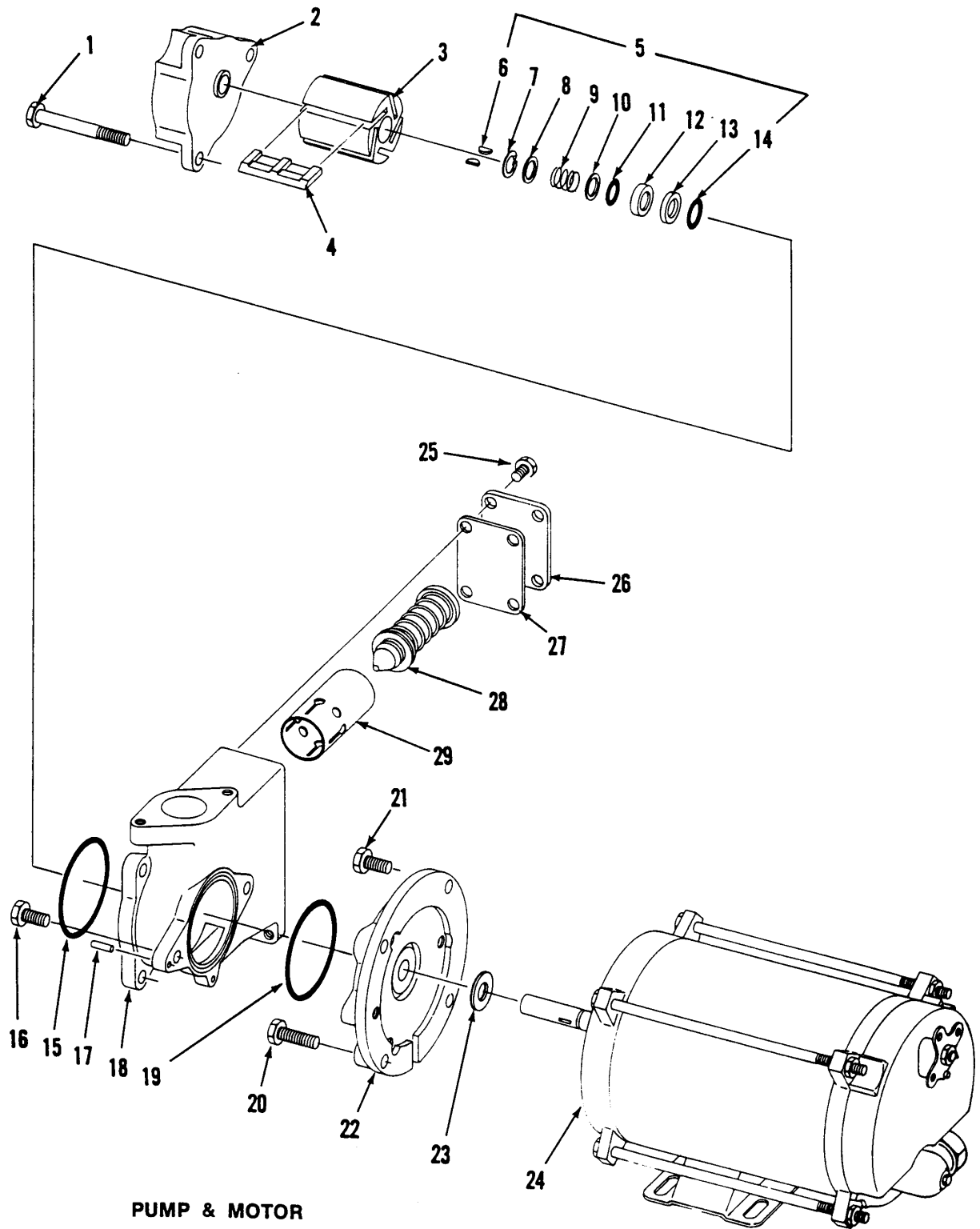


ASSEMBLY, MODEL 250, SIDE VIEW



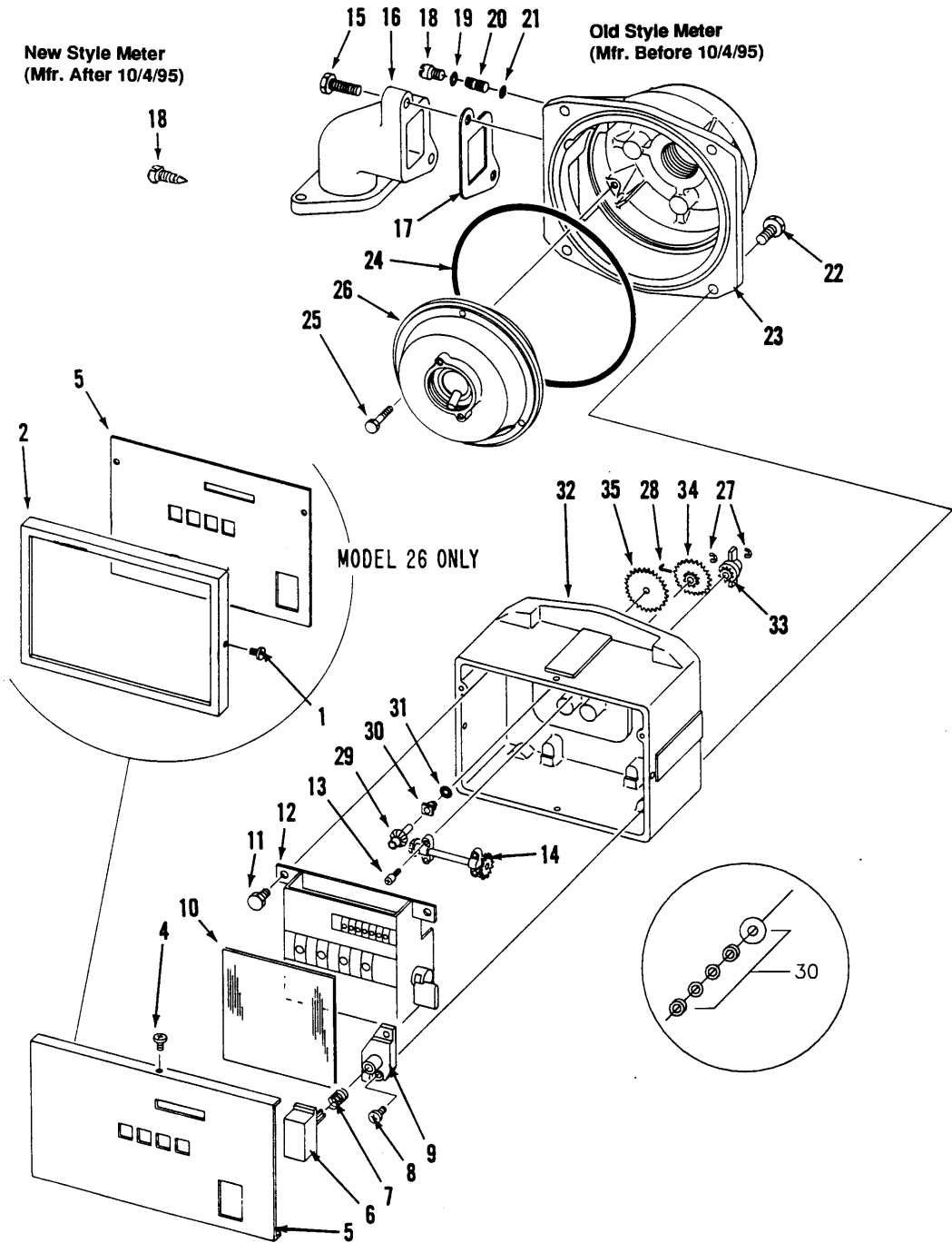
ASSEMBLY, MODEL 250, SIDE VIEW

Item	Part No.	Description
37	041711	Front Panel Assy
	041726	Front Panel Assy (Keytrol, Pulsar)
	040209	Front Panel (SS)
40	021040	Clip
41	012267	Bezel
42	041712	Rear Panel Assy
	041727	Rear Panel Assy (Keytrol, Pulsar)
	041738	Real Panel Assy (SS)
43	050624	Switch Rod Assy
44	021346	Conduit
45	003238	Junction Box
46	003463	Junction Box Cover
47	045430	Pipe 1-1/4" x 4 TBE
48	024947	Elbow 1-1/4 x 45 ⁰
49	044857	Pipe 1-1/4" x 3" TBE
50	038036	Pipe 1-1/4 x 1"
51	035010	Lock, w/Dust Cover
52	066387	Union 1-1/4"
61	011607	Base
64	017510	Lock Cam
65	020952	Spring Clip
66	017271	Bushing



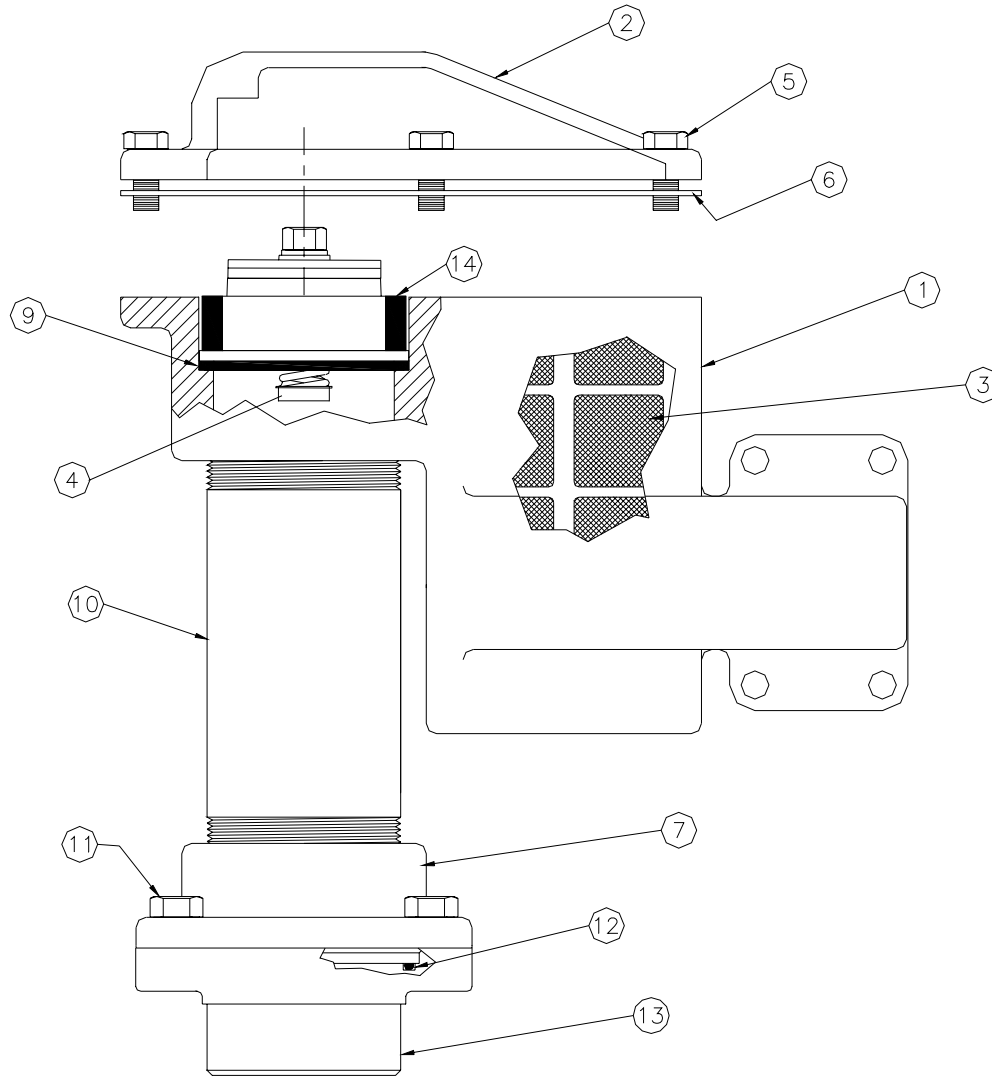
PUMP & MOTOR ASSEMBLY, MODELS 25 - 28 AND MODEL 250

Item	Part No.	Description
1	052135	Cap Screw, 3/8-16 x 3
2	022168	Pump Cover
3	051491	Rotor
4	067061	Vane
5	054030	Seal Assembly, includes items 6 - 14
6	031375	Woodruff Key
7	049436	E-ring
8	067210	Washer
9	057956	Spring
10	067210	Washer
11	048941	O-ring
12	049510	Rotating Seal Ring
13	048820	Floating Seal Ring
14	048956	O-ring
15	049180	O-ring
16	051985	Cap Screw, 3/8-16 x 3/4
17	054535	Locating Pin
18	003208	Pump Block
19	049180	O-ring
20	052045	Cap Screw, 3/8-16 x 1 1/4
21	051985	Cap Screw, 3/8-16 x 3/4
22	003722	Inner Pump Head
23	049525	Slinger Ring, Buna N side toward pumping unit
24	F37683	Motor, Model 25 & 250, 60 Hz.
	F37685	Motor, Model 25 & 250, 50 Hz.
	F37684	Motor, Model 26, 27, & 28, 60 Hz.
	F37686	Motor, Model 26, 27, & 28, 50 Hz.
	NOTE:	<i>When replacing a Model 25 motor, item numbers 6, 10, and 13 on page 6-3 must be replaced if replacing an AO Smith motor with a Franklin. In addition, it may be necessary to drill a clearance hole in the Model 25 side frame to prevent the on/off switch threads from interfering with the side of the unit.</i>
25	051880	Cap Screw, 5/16-18 x 1/2
26	023037	Bypass Cover
27	026811	Gasket
28	066991	Bypass Valve Assembly
29	065726	Tube, Bypass Valve



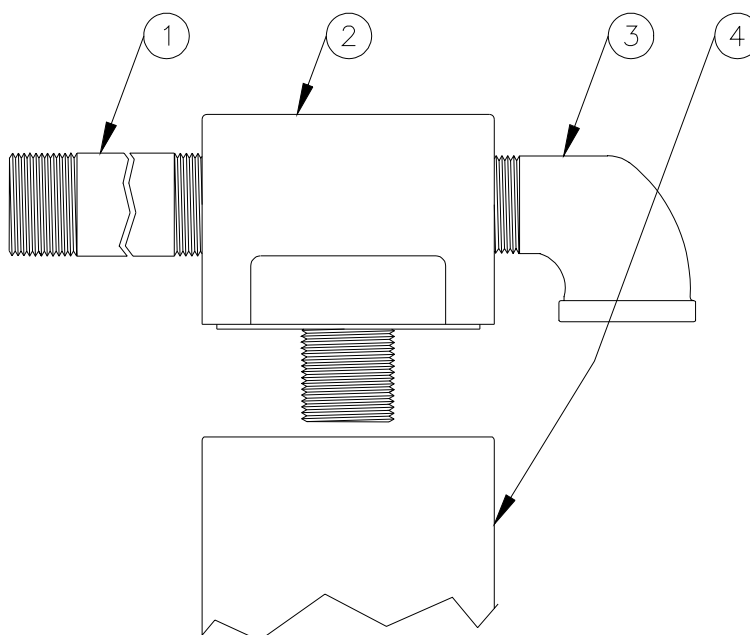
STRAINER BLOCK ASSEMBLY, MODELS 25-28

NOTE: A design change was made on 6/2/2003 replacing the metal check valve with a plastic check valve. If your pump serial number is 8139213 or older (US models) or 1028283C or older (Canada models), you must order retrofit kit 032083. The picture below shows instructions for kit 032631.



Item	Part No.	Description	Item	Part No.	Description
1	003207	Strainer Block	7	003648	Inlet Flange
2	003489	Strainer Cover, 25, 26, 27, 28, & 250	9	049136	Square Cut Ring
	003491	Strainer Cover, 250AR only	10	044942	Pipe TBE, 2 x 6
3	063282	Strainer (Gasoline), 100 Mesh	11	052015	Cap Screw, 3/8-16 x 1"
	063283	Strainer (Diesel), 40 Mesh	12	049167	O-ring, 2-1/2 x 2-11/16
4	020620	Check Valve Assembly	13	003078	Base
5	051895	Cap Screw, 5/16-18 x 3/4	14	065525	Spacer
6	027360	Gasket			

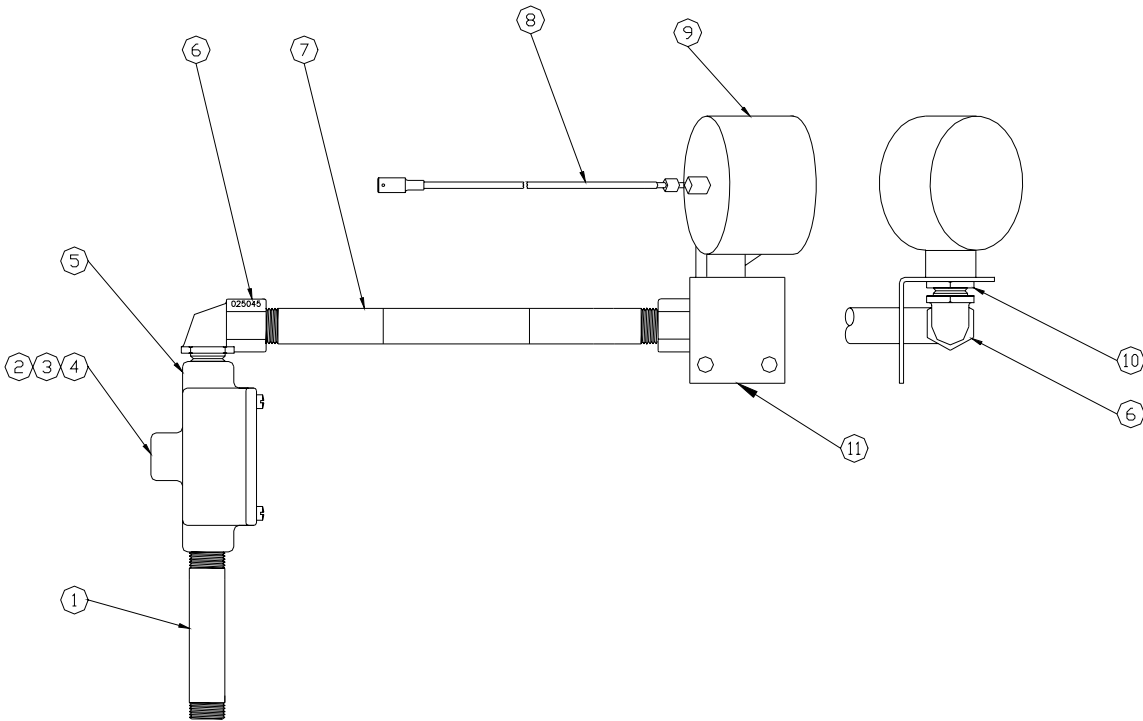
FILTER ASSEMBLY, MODELS 25 & 26



033028 Model 25 Gas
 033029 Model 25 Diesel
 033030 Model 26 Gas
 033031 Model 26 Diesel

Item	Part No.	Description
1	044579	Pipe TBE, 1 x 5-3/8, Model 25 & 250
	044614	Pipe TBE, 1 x 7-1/2, Model 26
2	003087	Filter Adapter
3	024941	Street Elbow, 1 x 90°
4	026018	Filter, Gas
	026019	Filter, Diesel

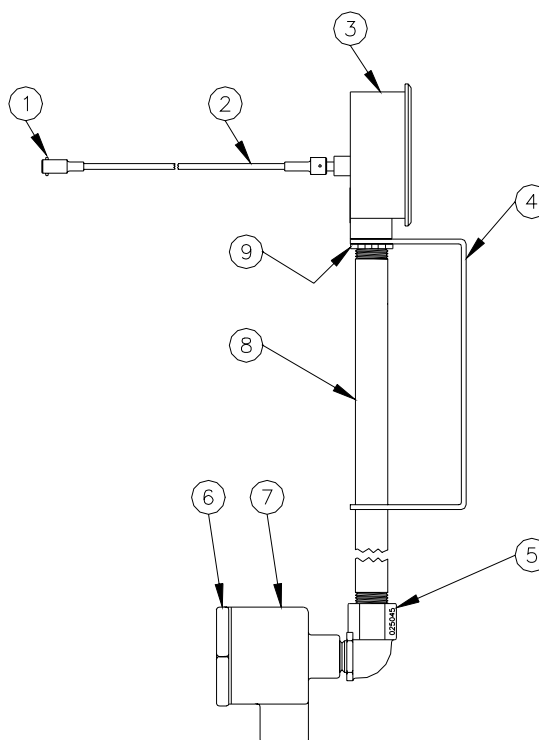
PULSER ASSEMBLY, MODEL 25



Item	Part No.	Description
1	021364	Conduit 1/2 x 3-1/2
2	052976	Screw, 10-32 x .375, SL BH
3	067500	Washer, Brass, Cupped
4	047212	Plug, Conduit, 1/2" w/Ground Screw
5	Z10186	Junction Box
6	025045	Elbow, Conduit, 1/2 x 90 M/F
7	021329	Conduit, Offset, 2-15/16 x 9-1/2
8	017335	Cable Assy.
9	021788	Pulser, 10:1, VR
10	039130	Nut, Conduit Lock
11	015077	Bracket, Pulser

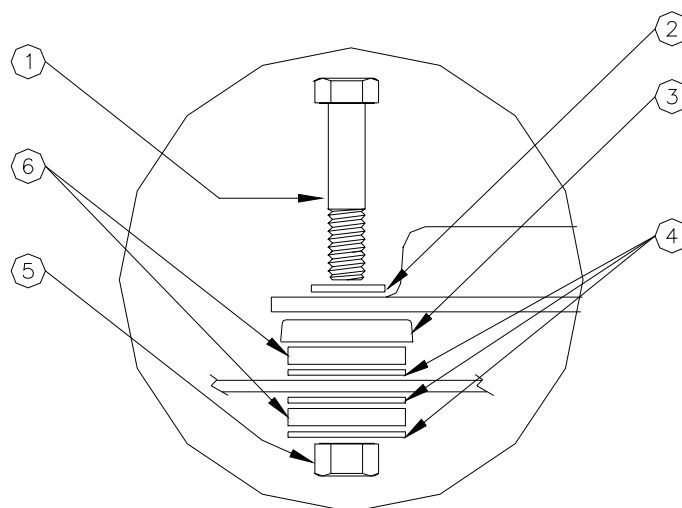
PULSER ASSEMBLY, MODEL 250

Item	Part No.	Description
1	043210	Pin, Spirol
2	017335	Cable Drive Assy.
3	021788	Pulser, 10:1, VR
4	014639	Bracket
5	025045	Elbow, Conduit, 1/2 x 90°, M/F
6	003515	Junction Box Cover, Mach.
7	003345	Junction Box
8	021454	Conduit, Pulser, Left Side
9	039130	Nut, Conduit Lock, 1/2"

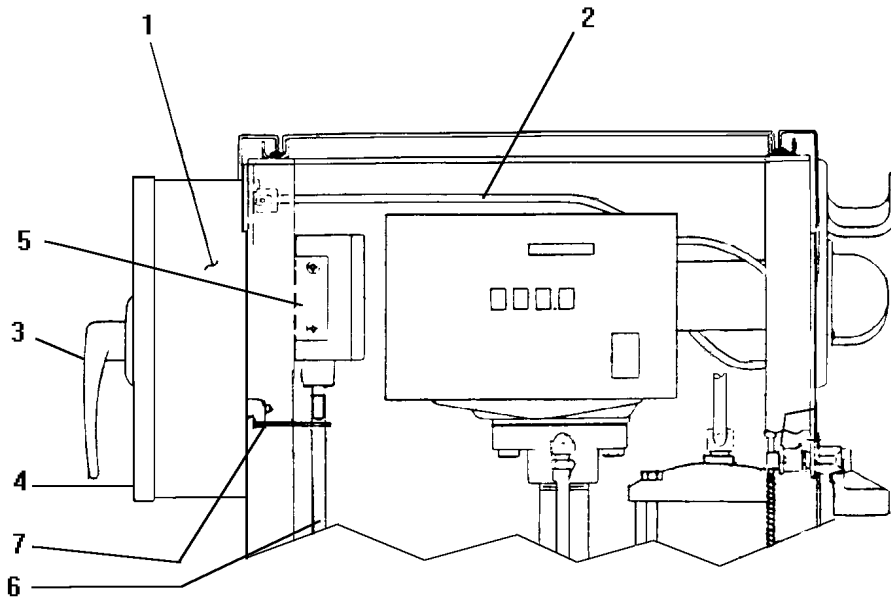


MOTOR MOUNT ASSEMBLY, MODEL 250

Item	Part No.	Description
1	051940	5/16-18 x 1-1/2 HHC Screw
2	068080	5/16 Washer
3	067735	Cup Washer
4	068620	Washer
5	038920	5/16-18 ESNA Nut
6	037885	Rubber Mount

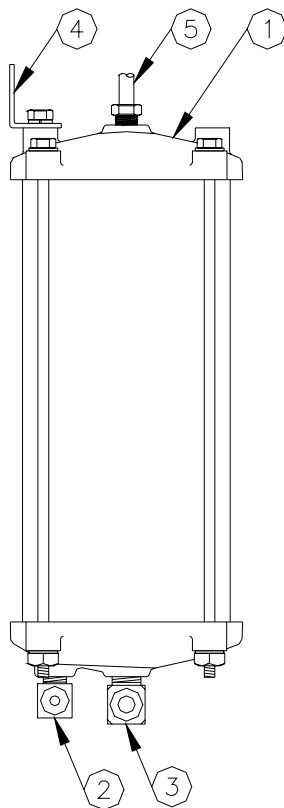


MECHANICAL KEYTROL BREAKDOWN, MODEL 250



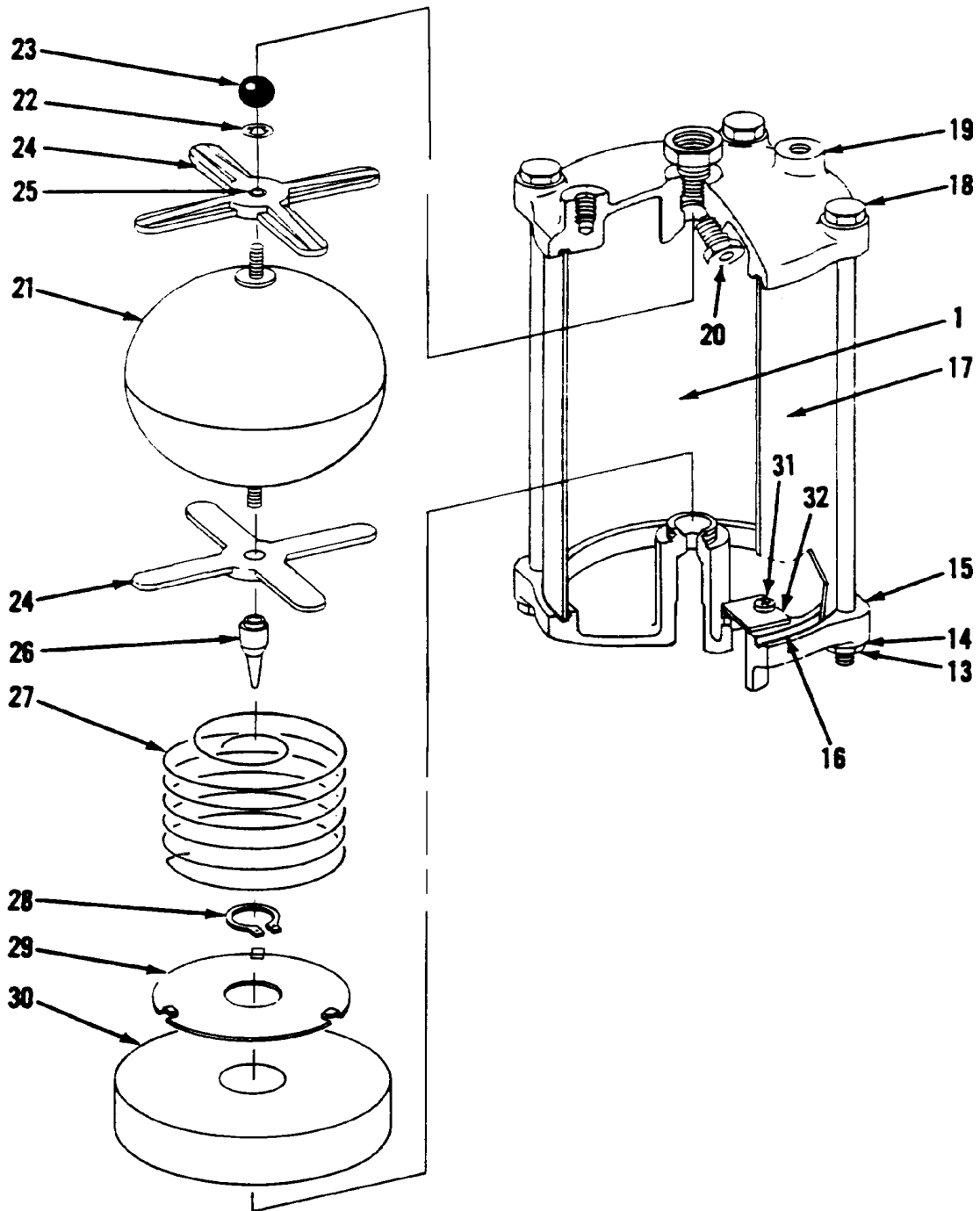
NOTE: Keytrol option discontinued as of March 1, 1994.

Item	Part No.	Description
1	032489	Keytrol, 10K
2	055254	Keytrol Drive Cable Assy.
3	029415	Locking Handle Assy.
4	024407	Door Assy.
5	064376	Switch Assy. and Conduit
6	021412	Cable, MI 54" x 2 x 14AWG
7	010009	Switch Activator Assy.

FLOAT ASSEMBLY, MODEL 250

Item	Part No.	Description
1	026474	Float Chamber Assy.
2	026044	Fitting, 3/8 Ct Elbow, Inv FI
3	026045	Fitting, 1/2 CT Elbow, Inv FI
4	015038	Bracket, Mounting
5	026049	Fitting, 1/4" Flare

FLOAT ASSEMBLY BREAKDOWN, MODEL 250

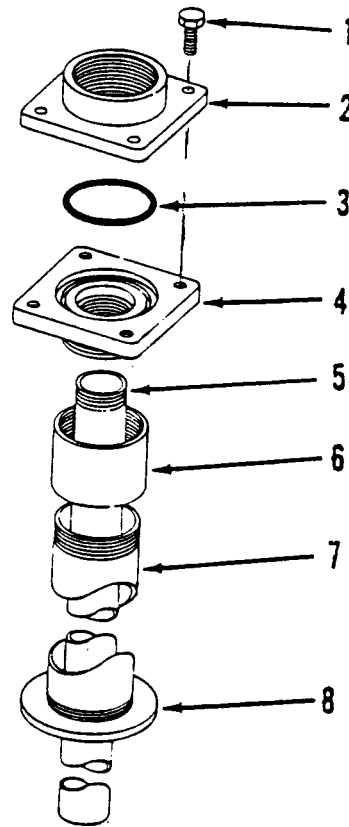


Item	Part No.	Description
1	026474	Float Chamber Assy.
13	038605	Keps Nut (4 req'd)
14	068080	Washer (4 req'd)
15	003497	Bottom Cover
16	027133	Gasket (2 req'd)
17	023550	Cylinder
18	013288	Tie bolt, (4 req'd)
19	003498	Top Cover
20	062620	Pressure Relief Valve
21	026441	Spherical Float, 4"
22	039506	Speed Nut
23	047139	Ball Plug
24	029007	Float Guide, (2 req'd)
25	056624	Sleeve
26	067011	Throttle Valve
27	057605	Float Balance Spring
28	049505	Snap Ring - Truarc
29	045738	Baffle Plate
30	021128	Coalescer
31	053737	Screw, Pan Head
32	022715	Orifice Cover

MOUNTING HARDWARE, MODELS 25-28

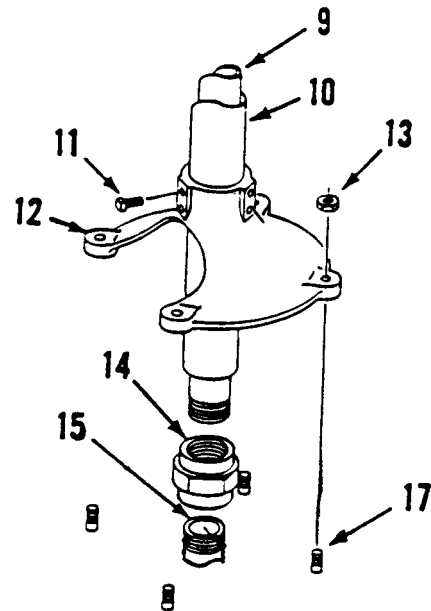
Direct Mount

Item	Part No.	Description
1	052015	Cap Screw
2	003648	Top Flange
3	049167	O-Ring
4	003078	Bottom Flange
5	044010	Suction Pipe
6	021970	Coupling, 2"
7	045535	Pedestal Pipe, 2" Dia.
8	N/A	Tank Flange



032039 Pedestal Kit

Item	Part No.	Description
9	044010	Suction Pipe
10	045535	Pedestal Pipe, 2" Dia.
11	053320	Set Screw
12	003055	Pedestal Base
13		Nut (customer-supplied)
14	066387	Union
15		Suction Pipe (customer-supplied)
17		Anchor Bolts (customer-supplied)



VACUUM BREAKER KITS

Current models are shipped with vacuum breakers; however, these kits can be used to modify older pumps without vacuum breakers:

- 032698 Model 25
- 032699 Model 26
- 032798 Models 27 and 28

In addition, a Vacuum Breaker Tubing Kit, P/N 032797 is available when tubing back to the tank is desired. Refer to **Vacuum Breaker** in Section 2 of this manual for tubing routing.

PUMP REPAIR KIT 032890

014095	Bearing, Seal Stuffing Box
026809	Gasket, Discharge
026810	Gasket, Inlet Manifold
026811	Gasket, Bypass Valve
026812	Gasket, Strainer Block
026814	Gasket
028736	Dial Glass
031345	Key, Spring
048665	O-Ring, 5/32 x 9/32 Buna-N
048895	O-Ring, 5/16 x 7/16 Buna-N
048940	O-Ring, 5/8 x 13/16 Buna-N
049062	O-Ring, 1-11/16 x 1-7/8 Buna-N
049063	O-Ring, 6 x 6-3/16, Buna
049180	O-Ring, 3 x 3-1/4 Buna-N
054512	Drive Shaft Assembly
067061	Vane, 25
049167	O-Ring, 2-1/2 x 2-11/16, Buna-N
032631	Kit, 25-28 Plastic Check Valve Retrofit Kit
054030	Kit, 25/26 Seal Assemblies
036995	Meter Parts Stuffing Box
017861	Instructions, Repair Kit
035282	Warnings and Safeguards Sheet

WARRANTY

General Statements:

Gasboy International LLC. warrants all new equipment manufactured by Gasboy against defective material and/or workmanship, for the warranty period specified below, when the equipment is installed in accordance with specifications prepared by Gasboy.

This warranty does not cover damage caused by accident, abuse, Acts of God, lack of surveillance of automatic recording systems, negligence, mis-application, faulty installation, improper or unauthorized maintenance, installation or use in violation of product manuals, instructions, or warnings. Under no circumstance shall Gasboy be liable for any indirect, special, or consequential damages, losses, or expenses to include, but not limited to, loss of product, loss of profits, litigation fees, or the use, or inability to use, our product for any for any purpose whatsoever.

Parts Only - During the warranty period, Gasboy will, at its option, repair or replace defective parts returned transportation prepaid to its factory.

On-Site Labor Included - Gasboy will also provide, within the Continental United States and during the warranty period, the services of an Authorized Service Representative (ASR) for on-site repair or replacement of defective parts.

Replacement Parts - Any system components that are not part of the original system order, including Island Card Readers, Pump Control Units, etc., are considered replacement parts.

Equipment	Term	Coverage
Commercial Pumps and Dispensers Full-Cabinet Consumer Pumps	One year from date of installation or 18 mos. from date of Gasboy International's invoice to the purchaser, whichever comes first.	Parts and Labor.
Small Transfer Pumps, Meters, Pressure Regulators	One year from date of installation or 18 mos. from date of Gasboy International's invoice to the purchaser, whichever comes first.- Excepting the Model 2020 Hand Pump, which has a 90-day warranty from date of GASBOY International's invoice.	Parts Only.
Keytrol	One year from date of installation or 18 mos. from date of Gasboy International's invoice to the purchaser, whichever comes first.	Parts and Labor.
Fuel Management Systems: - CFN/ Profit Point - Series 1000/Fleetkey - TopKAT - Fuel Point Readers (sold with new systems)	One year from date of start-up or 15 mos. from date of Gasboy International's invoice to the purchaser, whichever comes first.- The basic warranty only applies to systems which have been started up by a Gasboy Authorized Service Representative (ASR).	Parts and Labor.
Additional Fuel Point Items: - Fuel Point Readers sold for retrofitting existing systems. - Fuel Point vehicle and dispenser components.	One year from date of start-up or 15 mos. from date of Gasboy International's invoice to the purchaser, whichever comes first.	Parts Only.
Encoders, Embossers, Modems, CRTs, and Logger Printers	Purchased with Fuel Management System (Encoders, Embossers only): 90 days from the date of start-up by a Gasboy ASR, or 180 days from date of Gasboy International's invoice, whichever occurs first. Purchased with Fuel Management System (Modems, CRTs, and Logger Printers only): Matches system warranty. Purchased Separately: 90 days from date of Gasboy International's invoice to the purchaser.	Purchased with System (Encoders, Embossers only): Parts only. Purchased with System (Modems, CRTs, Logger Printers only): Matches system warranty. Purchased Separately: Parts Only.
Air Diaphragm Pumps	Three years from date of purchase (for full warranty description, see Price List).	Parts Only.
Items not manufactured by Gasboy (ex. automatic nozzles, hoses, swivels, etc.)	Not warranted by Gasboy International (consult original manufacturer's warranty).	Not Applicable.
Replacement Parts	One year from date of Gasboy International's invoice to the purchaser.	Parts Only.

To the extent permitted by law, this warranty is made in lieu of all other warranties, expressed or implied, including warranties of freedom from patent infringement, or merchantability, or fitness for a particular purpose, or arising from a course of dealing or usage of trade. No one is authorized to vary the terms of the warranty nor may anyone make any warranty of representation, or assume any liability other than that herein stated, in connection with the sale described herein. The acceptance of any order by Gasboy International is expressly made subject to the purchaser's agreement to these conditions.



GASBOY INTERNATIONAL LLC

P.O. Box 309, Lansdale, PA 19446 ● (800) 444-5579 ● FAX: (800) 444-5569 ● www.gasboy.com