

# **NEW PRODUCT BULLETIN:**

## **J72 & J79 SERIES COUPLER & ADAPTER REPAIR KITS**

To determine the correct repair kit for your coupler, find the coupler in the list and then follow the line to see all available kits. For example, the cross shaft seal kit for J72C-ABN1-B is 299786. *The DRY-BREAK-II™ “-B” variants are listed on the same line as the -A variants where the same kits are applicable.*

COUPLER PART #	Nose Seal Kit	Front End Repair Kit (Minor)	Front End Repair Kit (Major)	Nose Piece Kit	Cross Shaft Seal Kit	Lever Replacement Kit	Link & Stem Replacement Kit	Swivel Seal Kit	Swivel Replacement Kit	Bumper Ring Kit								
	Kit No	Kit No	Kit No	Kit No	Kit No	Kit No	Kit No	Kit No	Kit No	Kit No								
J72C-ABB0-A	8	8	2	2	2	299789	2	N/A	N/A									
J72C-ABI0-B		0	9	9				9	9		800532	299807						
J72C-ABI1-B		0	9	9				9	9		800533	299805						
J72C-ABI2-B		1	7	8				8	9		N/A	N/A						
J72C-ABN0-A or -B		0	7	8				1	9		299794	299794						
J72C-ABN0-A001 or -B001		0	4	0				3	9		299794	299794						
J72C-ABN0-A002		4	800176	299782				299815	7		299789	299789						
J72C-ABN1-A or -B		1	800174	299780				299813	8		299789	299789						
J72C-ABN1-A002		1	800176	299782				299815	8		299789	299789						
J72C-ABN2-A or -B		2	800174	299780				299813	6		299789	299789						
J72C-ABN2-A001 or -B001	0	800174	299780	299813	2	299789	2	299803	299809	2								
J72C-ABN2-A002 or -B002		800176	299782	299815				9	299802		299808							
J72C-AVB0-A		8	8	2				2	9		N/A	N/A						
J72C-AVB1-A		0	0	9				9	9		N/A	N/A						
J72C-AVI0-B		0	0	9				9	7		800536	299808						
J72C-AVI1-B		0	1	7				8	9		800537	299806						
J72C-AVI2-B		0	7	8				8	9		N/A	N/A						
J72C-AVN0-A or -B		0	5	1				1	0		7	7	N/A	N/A				
J72C-AVN0-A001 or -B001		4	800175	299781				4	7		299795	299795	299802	299812				
J72C-AVN0-A002 or -B002		1	800177	299783				299816	8		299790	299790	299804	299810				
J72C-AVN1-A or -B	3	800175	299781	299814	7	299795	7	299804	299810	5								
J72C-AVN2-A or -B								299795	299795		299804	299810						
J72C-AVN2-A001 or -B001								299795	299795		299804	299810						
J72C-SBN0-A								800412	800176		299782	299815	299786	299791	299798	N/A	N/A	
J72C-SBI0-B											800272	800284	800274	800276	800282			
J72C-SBN0-B											800272	800284	800274	800276	800282			
J72C-SPB0-A											299784	299817	299788	299793	299800			
J72C-SPI0-B											800285	800293	800286	800289	800291			
J72C-SPN0-A											299784	299817	299788	299793	299800			
J72C-SPN0-B											800285	800293	800286	800289	800291			
J72C-SVB0-A	299783	299816	299787	299792	299799													
J72C-SVI0-B	800288	800280	800287	800290	800292													
J72C-SVN0-A	299783	299816	299787	299792	299799													
J72C-SVN0-B	800288	800280	800287	800290	800292													
J79C-ABN0-A or -B	800412	800174	299780	299813	299786	299789	299796											
J79C-AVN0-A or -B	800413	800175	299781	299814	299787	299790	299797											

Below are the kits available for Emco Wheaton 1.5” and 2” Adapters.

Adapter Part #	Repair Kit No.	Adapter Part #	Repair Kit No.
All J1302 & J1304 Buna	800530	J72 & J79 Buna REV. B Alum & Brass	800300
All J1302 & J1304 Viton	800529	J72 & J79 VITON REV. B Alum & Brass	800303
J72 & J79 Buna REV. A Alum & Brass	494118	J72 STAINLESS / VITON REV. A	800331
J72 & J79 VITON REV. A Alum & Brass	494119	J72 STAINLESS / CHEMRAZ REV. A	800333

EMCO WHEATON CORP.  
 2480 Bristol Circle, Oakville,  
 Ontario, Canada, L6H 5S1  
 Tel: 905-829-8619  
 Fax: 905-829-8620  
 Revised: March 2004



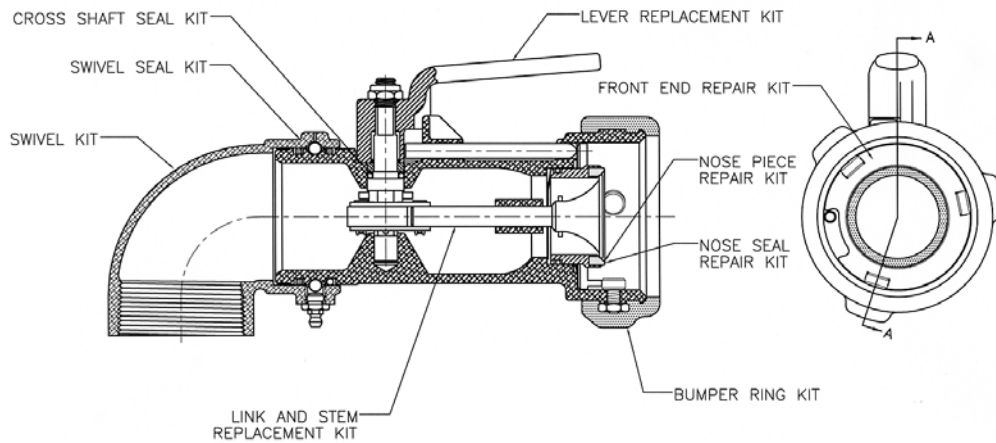
A Gardner Denver Company  
[www.emcowheatoncanada.com](http://www.emcowheatoncanada.com)



# **NEW PRODUCT BULLETIN:**

## **J72 & J79 SERIES COUPLER & ADAPTER REPAIR KITS**

**DRY-BREAK II**



Emco Wheaton has developed a series of **REPAIR KITS** suitable for the field repair of J72 & J79 Series Couplers and Adapters.

Our previous experience with this type of **KIT PROGRAM** has proven its value. If a Coupler or Adapter has a leaky seal or O-Ring, or a part worn, the installation of a complete **REPAIR KIT** in that area of concern will give the user far better value for the money, rather than just replacing one or two parts.

The installation of the **KIT** renders a wear zone on the Coupler or Adapter completely rebuilt, and will consequently give longer service life. These **KITS** are available off the shelf, and come complete with instructions and diagram. The part number is prominently displayed for easy stock identification. Below is a summary of the usage and contents of each type of **KIT**:

**Front End Repair Kits (Major):** For rebuilding the front end of the coupler. Contains Wave springs (2), O-Ring, Wave washer, Interlock plate, Interlock Pin, Bayonet studs (3) and Lock Nuts (3), Bumper ring, Nose seal, Nose Piece, Cotter Pin, and Grooved Pin.

**Front End Repair Kits (Minor – Soft Parts):** For repairing the front end of the coupler. Contains Wave springs (2), O-Ring, Wave washer, Bayonet studs (3) and Lock Nuts (3), Bumper ring, Nose seal, Cotter Pin, and Grooved Pin.

**Nose Seal Kit:** For replacing the Nose Seal. Contains Nose seal, O-Ring, and Cotter Pin.

**Nose Piece Kit:** For replacement of a damaged poppet and nosepiece. Contains Nose Piece, Nose Seal, O-Ring, Poppet, and Cotter Pin.

**Bumper Ring Kit:** For replacing bumper rings that are worn or damaged. Contains 4 Bumper rings

**Cross Shaft Seal Kit:** For repairing leaks in the cross-shaft area. Contains O-Ring, Nylock Nut, Groove Pin, Roll Pin, Follower. “B” Version Stainless contains flat washer, shaft retainer, bearing bushing, collar, inner bushing, O-Ring, Nylock Nut.

**Lever Replacement Kit:** For replacing the lever and cross-shaft. Contains Lever, cross shaft and contents of “Cross Shaft Seal Kit” (see above).

**Link & Stem Replacement Kit:** For complete replacement of a damaged Link & Stem Assembly. Contains Link & Stem Assembly and contents of “Cross Shaft Seal Kit” (see above).

**Swivel Seal Kit:** For complete repair and rebuilding of either 90° or straight Swivel. Contains Dust seal O-Ring, Liquid seal O-Ring, Grease Fitting, Ball bearings (6), Bearing Strip, Ball Retainer Screw, and gasket (ISO / BSPP versions only).

**Swivel Replacement Kit:** For complete replacement of either 90° or straight Swivel. Contains Swivel Body and contents of “Swivel Seal Kit” (See above).

**Adapter Kits:** For repair of Adapter. Contains Seal O-Ring or Disc, Valve Spring, and Screw, Retaining Ring, Nylon Insert, Nylon Washer (Where applicable).

*All Kits include Silicone Oil, Diagram, and Instruction Sheet.*

EMCO WHEATON CORP.  
2480 Bristol Circle, Oakville,  
Ontario, Canada, L6H 5S1  
Tel: 905-829-8619  
Fax: 905-829-8620  
Revised: March 2004

**EMCO WHEATON™**

A Gardner Denver Company  
[www.emcowheatoncanada.com](http://www.emcowheatoncanada.com)

