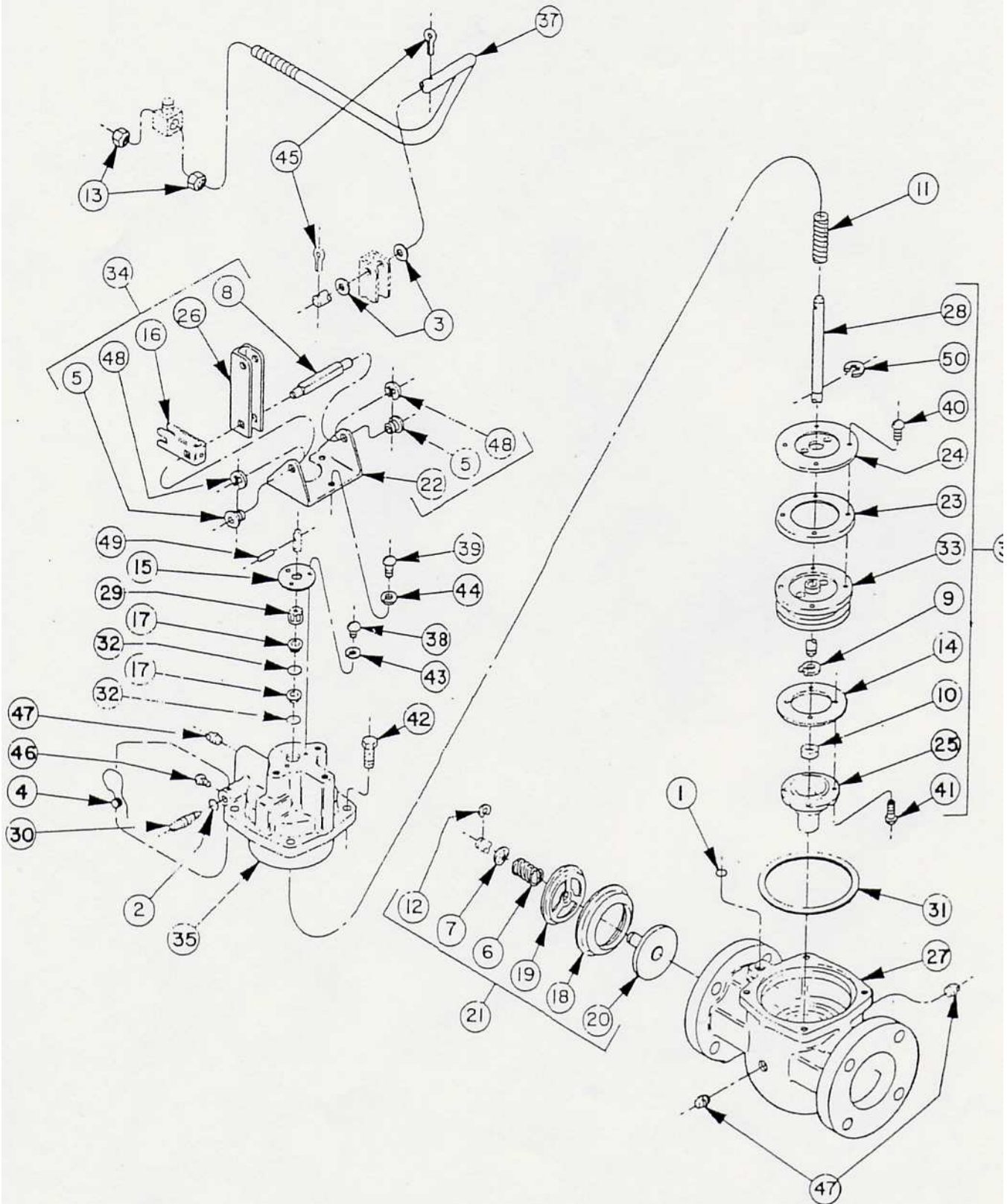


1½" HYDRAULIC VALVE MODEL #1550A-15-SP & -AF



1½" HYDRAULIC VALVE ASSEMBLY MODEL #1550A-15-SP & -AF

ITEM NO.	NAME OF PART	MODEL 1550A-SP	MODEL 1550A-AF
1	"O" Ring	503-27-015	503-27-015
2	"O" Ring	507-27-120	503-27-120
3	Washer	562-03-678	562-03-678
4	Seal Wire & Seal	504-28-980	504-28-980
5	Shaft Bearing	504-28-456	504-28-456
6	Spring	504-28-675	504-28-675
7	Poppet Spring Washer	562-03-690	562-03-690
8	Valve Handle Shaft	504-28-875	504-28-875
9	Retaining Ring	504-08-028	504-08-028
10	Valve Seat	504-28-890	504-28-890
11	Poppet Spring	504-28-680	504-28-680
12	Truarc Retaining Ring	504-08-040	504-08-040
13	Locknut 5/16-18	504-27-995	504-27-995
14	Valve Disc	504-28-060	504-28-060
15	Compression Washer	352-02-025	352-02-025
16	Lifter	354-04-090	354-04-090
17	Seal	352-00-110	352-00-110
18	Valve Seat	504-28-891	504-28-891
19	Poppet Guide	504-28-064	504-28-064
20	Poppet & Stem Assembly	352-00-045	352-00-045
21	Poppet Assembly	352-00-070	352-00-070
22	Bracket	504-27-010	504-27-010
23	Plunger Cup Kit	352-02-205	352-02-205
24	Plunger Cup Support	504-28-045	504-28-050
25	Poppet Guide w/Valve Seat (Includes Items 10 & 41)	352-02-250	352-02-250
26	Actuating Arm	350-80-020	350-80-020
27	Valve Body Assembly	352-00-140	352-00-140
28	Valve Stem	504-28-910	504-28-910
29	Spacer Bearing	504-28-660	504-28-660
30	By-Pass Screw	504-27-075	504-27-075
31	Gasket	502-26-380	502-26-260
32	Gasket	502-26-210	502-26-210
33	Plunger	352-00-015	352-00-015
34	Valve Lift Assembly	352-00-205	352-00-205
35	Valve Cover	352-00-160	352-00-160
36	Poppet Assembly	352-00-075	352-00-080
37	Connecting Link	504-27-130	504-27-130
38	Rd. Hd. Mach. Screw #10-24 x 1/2	557-03-048	557-03-048
39	Rd. Hd. Mach. Screw 1/4-20 x 1/2	557-03-005	557-03-005
40	Rd. Hd. Mach. Screw #10-24 x 1/2	557-03-052	557-03-052
41	Rd. Hd. Mach. Screw #10-24 x 5/8	557-03-056	557-03-056
42	Rd. Hd. Cap Screw 5/16-18 x 1	555-11-076	555-11-076
43	Lockwasher #10	562-03-632	562-03-632
44	Lockwasher 1/4	562-03-604	562-03-604
45	Cotter Pin 1/16 Dia. x 1/2	565-05-604	565-05-604
46	P.K. Drive Screw - Type "U" #4 x 1/4	562-10-011	562-10-011
47	Sq. Hd. Pipe Plug 1/4	507-01-414	507-01-414
48	Retaining Ring - Type "E"	504-08-038	504-08-038
49	Roll Pin 5/32 Dia. x 5/8	562-10-116	562-10-116
50	Retaining Ring - Type "E"	504-08-036	504-08-036

Note: "SP" Valve is Teflon-Trimmed, Use the Part Numbers Shown in "AF" Column.

ON ORDERING PARTS, ALWAYS GIVE THE METER SERIAL NUMBER.