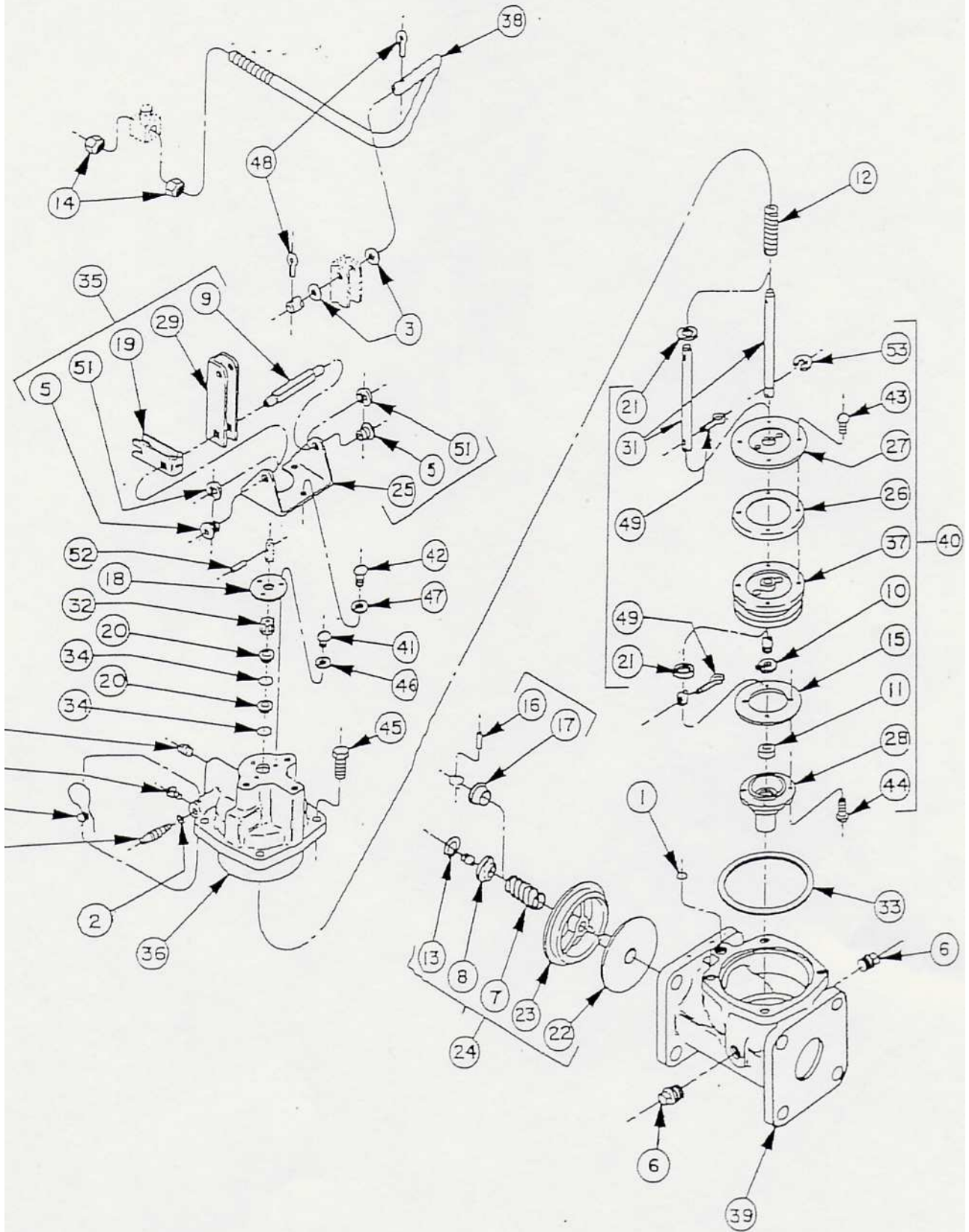


2" HYDRAULIC VALVE #1550A-20-SP,AF, AFSK, & SS



2" HYDRAULIC VALVE MODEL 1550A-20-SP, AF, AFSK & SS

ITEM NO.	NAME OF PART	MODEL 1550A-SP	MODEL 1550A-AF	MODEL 1550A-AFSK	MODEL 1550A-SS
1*	"O" Ring	503-02-702	503-03-202 503-27-120	503-03-202	503-03-202
2	"O" Ring	503-27-120	503-27-120	503-27-120	503-27-120
3	Washer	503-02-510	503-02-510	503-02-510	503-02-510
4	Seal Wire & Seal	504-28-980	504-28-980	504-28-980	504-28-980
5	Shaft Bearing	504-28-456	504-28-456	504-28-456	504-28-456
6	Sq. Hd. Pipe Plug 1/4	507-01-414	507-01-414	507-01-414	507-01-416
7	Spring	504-28-675	504-28-675	504-28-675	504-28-675
8	Poppet Spring Washer	562-03-690	562-03-690	562-03-690	—
9	Valve Handle Shaft	504-28-875	504-28-875	504-28-875	504-28-875
10	Retaining Ring	504-08-028	504-08-028	504-08-028	—
11	Valve Seat (Included w/Item #28)	504-28-890	504-28-890	504-28-890	504-28-890
12	Poppet Spring	504-28-680	504-28-680	504-28-680	504-28-685
13	Truarc Retaining Ring	504-08-040	504-08-040	504-08-040	—
14	Locknut 5/16-18	504-27-995	504-27-995	504-27-995	504-27-995
15	Valve Disc	504-28-060	504-28-060	504-28-060	504-28-060
16	Roll Pin 3/32 Dia. x 7/16 lg.	—	—	—	562-10-109
17	Spring Retainer	352-02-025	352-02-025	352-02-025	504-28-710
18	Compression Washer	354-04-090	354-04-090	354-04-090	352-02-025
19	Lifter	352-00-110	352-00-110	352-00-110	354-04-090
20	Seal	—	—	—	352-00-110
21	Washer	—	—	—	562-03-666
22	Poppet & Stem Assembly	352-02-085	352-02-085	352-02-085	352-02-090
23	Valve Seat	354-04-050	354-04-050	354-04-050	352-02-200
24	Poppet Assembly	252-02-305	252-02-305	252-02-315	252-02-310
25	Bracket	504-27-010	504-27-010	504-27-010	504-27-010
26	Plunger Cup Kit	352-02-205	352-02-205	352-02-205	352-02-205
27	Plunger Cup Support	504-28-045	504-28-050	504-28-050	504-28-055
28	Poppet Guide w/Valve Seat (Includes Items 11 & 44)	352-02-250	352-02-250	352-02-255	352-02-260
29	Actuating Arm	350-80-020	350-80-020	350-80-020	350-80-020
30	By-Pass Screw	504-27-075	504-27-075	504-27-075	504-27-075
31	Valve Stem	504-28-910	504-28-910	504-28-910	504-28-915
32	Spacer Bearing	504-28-660	504-28-660	504-28-660	504-28-660
33*	O-Ring	503-02-741	503-03-241	503-03-241	503-03-241
34	Gasket	502-26-210	506-26-210	506-26-210	506-26-210
35	Valve Lift Assembly	352-00-205	352-00-205	352-00-205	352-00-205
36	Valve Cover	352-00-160	352-00-160	352-00-165	352-00-170
37	Plunger	352-00-015	352-00-015	352-00-020	352-00-025
38	Connecting Link	352-02-035	352-02-035	352-02-035	352-02-040
39	Valve Body Assembly	352-02-160	352-02-160	352-02-165	352-02-170
40*	Poppet Assembly	352-00-075	352-00-080	352-00-085	352-00-090
41	Rd. Hd. Mach. Screw #10-24 x 1/2	557-03-048	557-03-048	557-03-048	557-03-050
42	Rd. Hd. Mach. Screw 1/4-20 x 1/2	557-03-005	557-03-005	557-03-005	557-03-010
43	Rd. Hd. Mach. Screw #10-24 x 1/2	557-03-052	557-03-052	557-03-052	557-03-050
44	Rd. Hd. Mach. Screw #10-24 x 3/8	557-03-056	557-03-056	557-03-056	557-03-054
45	Hex. Hd. Cap Screw 5/16-18 x 1	555-11-076	555-11-076	555-11-076	555-21-040
46	Lockwasher #10	562-03-632	562-03-632	562-03-632	562-03-642
47	Lockwasher 1/4	562-03-604	562-03-604	562-03-604	562-03-602
48	Cotter Pin 1/16 Dia. x 1/2	565-05-604	565-05-604	565-05-604	565-05-604
49	Cotter Pin 1/16 Dia. x 1/2	—	—	—	562-05-605
50	Drive Screw - Type "U" #4 x 1/4	562-10-011	562-10-011	562-10-011	562-10-011
51	Retaining Ring - Type "E"	504-08-038	504-08-038	504-08-038	504-08-038
52	Roll Pin 5/32 Dia. x 5/8	562-10-116	562-10-116	562-10-116	562-10-116
53	Retaining Ring - Type "E"	504-08-036	504-08-036	504-08-036	—

* If the "SP" Valve is Teflon-Trimmed, use part number shown in the "AF" column.

WHEN ORDERING PARTS, ALWAYS GIVE THE VALVE SERIAL NUMBER